

Ball joints DIN 71802

Item description/product images



Description

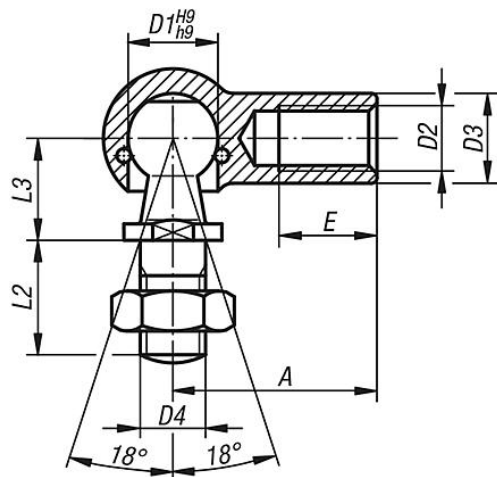
Material:
Steel or 1.4305 stainless steel.
Neoprene seal.

Version:
Trivalent passivated.
Stainless steel version bright.

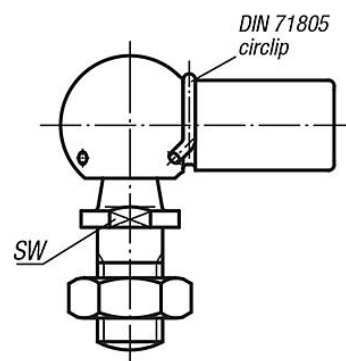
Note:
With snap ring.

Drawings

Form C
without circlip



Form CS
with circlip



Overview of items

Ball joints DIN 71802

Order No.	Version 2	Form	Main material	Component material	D1	D2	D3	D4	A	L2	L3	E	SW
K0734.0805	rh thread	C	steel	-	8	M5	8	M5	22	10,2	9	10,2	7
K0734.1006	rh thread	C	steel	-	10	M6	10	M6	25	12,5	11	11,5	8
K0734.1308	rh thread	C	steel	-	13	M8	13	M8	30	16,5	13	14	11
K0734.1610	rh thread	C	steel	-	16	M10	16	M10	35	20	16	15,5	13
K0734.1612	rh thread	C	steel	-	16	M12	16	M12	35	20	16	15,5	13
K0734.1914	rh thread	C	steel	-	19	M14x1,5	22	M14x1,5	45	28	20	21,5	16
K0734.1916	rh thread	C	steel	-	19	M16	22	M16	45	28	20	21,5	16
K0734.080501	lh thread	C	steel	-	8	M5	8	M5	22	10,2	9	10,2	7
K0734.100601	lh thread	C	steel	-	10	M6	10	M6	25	12,5	11	11,5	8
K0734.130801	lh thread	C	steel	-	13	M8	13	M8	30	16,5	13	14	11
K0734.161001	lh thread	C	steel	-	16	M10	16	M10	35	20	16	15,5	13
K0734.161201	lh thread	C	steel	-	16	M12	16	M12	35	20	16	15,5	13
K0734.191401	lh thread	C	steel	-	19	M14x1,5	22	M14x1,5	45	28	20	21,5	16
K0734.191601	lh thread	C	steel	-	19	M16	22	M16	45	28	20	21,5	16
K0734.080351	rh thread	CS	steel	-	8	M3,5	8	M4	18	10,2	9	8	7
K0734.08051	rh thread	CS	steel	-	8	M5	8	M5	22	10,2	9	10,2	7
K0734.10061	rh thread	CS	steel	-	10	M6	10	M6	25	12,5	11	11,5	8
K0734.13081	rh thread	CS	steel	-	13	M8	13	M8	30	16,5	13	14	11
K0734.16101	rh thread	CS	steel	-	16	M10	16	M10	35	20	16	15,5	13
K0734.16121	rh thread	CS	steel	-	16	M12	16	M12	35	20	16	15,5	13

Ball joints DIN 71802

Overview of items

Order No.	Version 2	Form	Main material	Component material	D1	D2	D3	D4	A	L2	L3	E	SW
K0734.19141	rh thread	CS	steel	-	19	M14x1,5	22	M14x1,5	45	28	20	21,5	16
K0734.19161	rh thread	CS	steel	-	19	M16	22	M16	45	28	20	21,5	16
K0734.080511	lh thread	CS	steel	-	8	M5	8	M5	22	10,2	9	10,2	7
K0734.100611	lh thread	CS	steel	-	10	M6	10	M6	25	12,5	11	11,5	8
K0734.130811	lh thread	CS	steel	-	13	M8	13	M8	30	16,5	13	14	11
K0734.161011	lh thread	CS	steel	-	16	M10	16	M10	35	20	16	15,5	13
K0734.161211	lh thread	CS	steel	-	16	M12	16	M12	35	20	16	15,5	13
K0734.191411	lh thread	CS	steel	-	19	M14x1,5	22	M14x1,5	45	28	20	21,5	16
K0734.191611	lh thread	CS	steel	-	19	M16	22	M16	45	28	20	21,5	16
K0734.08052	rh thread	CS	stainless steel	-	8	M5	8	M5	22	10,2	9	10,2	7
K0734.10062	rh thread	CS	stainless steel	-	10	M6	10	M6	25	12,5	11	11,5	8
K0734.13082	rh thread	CS	stainless steel	-	13	M8	13	M8	30	16,5	13	14	11
K0734.16102	rh thread	CS	stainless steel	-	16	M10	16	M10	35	20	16	15,5	13
K0734.16122	rh thread	CS	stainless steel	-	16	M12	16	M12	35	20	16	15,5	13
K0734.080521	lh thread	CS	stainless steel	-	8	M5	8	M5	22	10,2	9	10,2	7
K0734.100621	lh thread	CS	stainless steel	-	10	M6	10	M6	25	12,5	11	11,5	8
K0734.130821	lh thread	CS	stainless steel	-	13	M8	13	M8	30	16,5	13	14	11
K0734.161021	lh thread	CS	stainless steel	-	16	M10	16	M10	35	20	16	15,5	13
K0734.161221	lh thread	CS	stainless steel	-	16	M12	16	M12	35	20	16	15,5	13
K0734.108052	rh thread	CS	stainless steel	neoprene	8	M5	8	M5	22	10,2	9	10,2	7
K0734.110062	rh thread	CS	stainless steel	neoprene	10	M6	10	M6	25	12,5	11	11,5	8
K0734.113082	rh thread	CS	stainless steel	neoprene	13	M8	13	M8	30	16,5	13	14	11
K0734.116102	rh thread	CS	stainless steel	neoprene	16	M10	16	M10	35	20	16	15,5	13
K0734.116122	rh thread	CS	stainless steel	neoprene	16	M12	16	M12	35	20	16	15,5	13
K0734.108051	lh thread	CS	stainless steel	neoprene	8	M5	8	M5	22	10,2	9	10,2	7
K0734.110061	lh thread	CS	stainless steel	neoprene	10	M6	10	M6	25	12,5	11	11,5	8
K0734.113081	lh thread	CS	stainless steel	neoprene	13	M8	13	M8	30	16,5	13	14	11
K0734.116101	lh thread	CS	stainless steel	neoprene	16	M10	16	M10	35	20	16	15,5	13
K0734.116121	lh thread	CS	stainless steel	neoprene	16	M12	16	M12	35	20	16	15,5	13