

Vertical Toggle Clamp

Part No. GH-101-AI



Product Description

Vertical Toggle Clamp Straight
Base Slotted Arm Size 50Kg

Key Features

Overall Height: 85.7mm
Underarm Height: 27.2mm
Arm Length: 24.6mm
Holding Force: 50Kg

Other Features

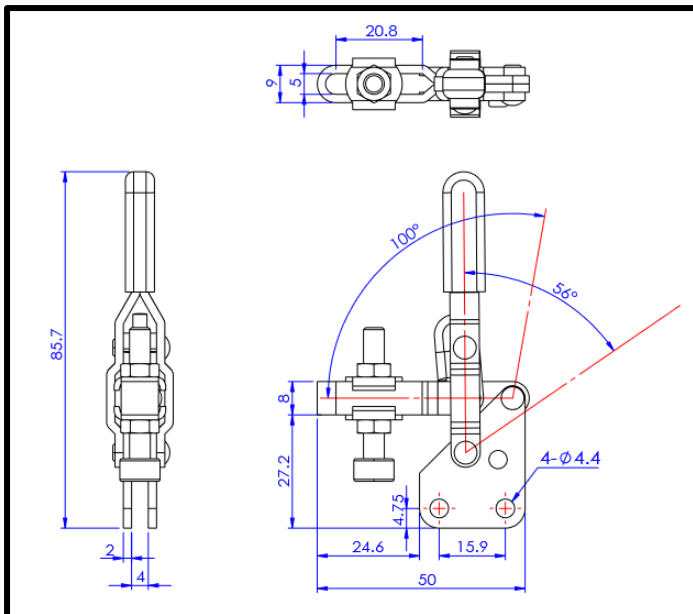
Arm Opens: 100°
Handle Opens: 56°
Weight: 0.06Kg

Material

Clamp: Zinc Plated Mild Steel
Spindle: Neoprene Tipped Steel
Handle: uPVC

What's In The Bag?

GH-101-AI: Toggle Clamp
FC-053708-LP: M5x37mm Neoprene Tipped
Steel Spindle With Nuts
2x FW-100: Flanged Washers For M5 Spindle



goodhanduk.co.uk

01908 221 151