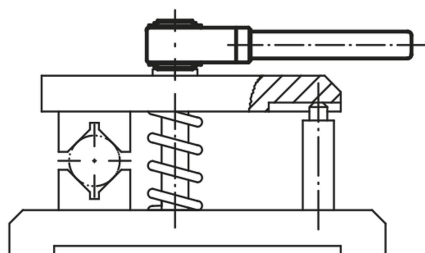


## Ratchet levers

### Item description/product images



### Description

**Material:**

Housing carbon steel, tension nut and tension pin case-hardened steel.

**Version:**

Black oxidised.

Matt-finished or high-polish chrome-plated versions available at extra charge.

**Note:**

Tension Pin A standard version (for ratchet action):

Use for clamping and releasing in limited space and when considerable travel is involved. In order to change the tightening direction, the handle must be reversed by 180°.

Tension Pin B special version:

Use for clamping and releasing in limited space and when short travel is involved.

The handle is not reversed in order to change the tightening direction. It must be pulled out before it can be engaged in the next slot.

**On request:**

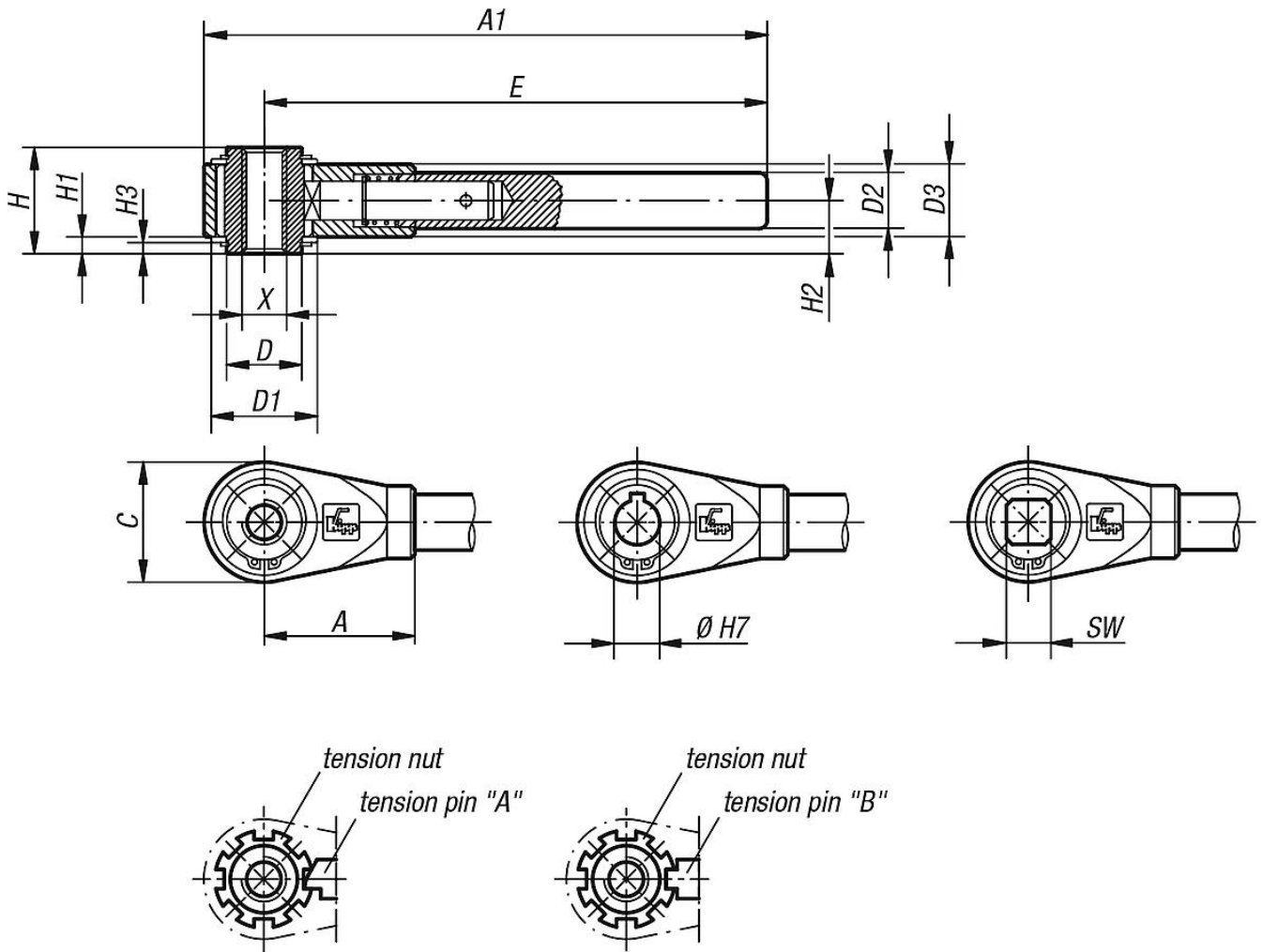
Other thread, reamed hole and square socket sizes.

Dimension "E" available in other lengths at extra charge.

Special version: Tension pin B.

Ratchet levers

Drawings



Overview of items

Ratchet levers with internal thread

Order No.	Thread type	Size	X	Reamed hole H7 with DIN 6885-1 keyway	Square socket SW	D	D1	D2	D3	H	H1	H2	H3	C	A	A1=handle length	E	No. of index slots
K0128.310	internal thread	1	M10	-	-	22	33	17	22	31	4,5	15,5	3	36	48	168	150	7
K0128.312	internal thread	1	M12	-	-	22	33	17	22	31	4,5	15,5	3	36	48	168	150	7
K0128.314	internal thread	2	M14	-	-	27	38	20	26	38	6	19	4	43	54	201,5	180	8
K0128.316	internal thread	2	M16	-	-	27	38	20	26	38	6	19	4	43	54	201,5	180	8
K0128.318	internal thread	3	M18	-	-	35	45	24	30	42	6	21	4	51	70	255,5	230	8
K0128.320	internal thread	3	M20	-	-	35	45	24	30	42	6	21	4	51	70	255,5	230	8
K0128.322	internal thread	4	M22	-	-	42	56	28	35	47	6	23,5	4	61	80	330,5	300	9
K0128.324	internal thread	4	M24	-	-	42	56	28	35	47	6	23,5	4	61	80	330,5	300	9
K0128.327	internal thread	4	M27	-	-	42	56	28	35	47	6	23,5	4	61	80	330,5	300	9
K0128.330	internal thread	5	M30	-	-	60	75	32	38	53	7,5	26,5	5	82	110	441	400	11
K0128.336	internal thread	5	M36	-	-	60	75	32	38	53	7,5	26,5	5	82	110	441	400	11
K0128.342	internal thread	5	M42	-	-	60	75	32	38	53	7,5	26,5	5	82	110	441	400	11
K0128.412	reamed hole with slot	1	-	12	-	22	33	17	22	31	4,5	15,5	3	36	48	168	150	7
K0128.414	reamed hole with slot	2	-	14	-	27	38	20	26	38	6	19	4	43	54	201,5	180	8
K0128.415	reamed hole with slot	2	-	15	-	27	38	20	26	38	6	19	4	43	54	201,5	180	8
K0128.416	reamed hole with slot	2	-	16	-	27	38	20	26	38	6	19	4	43	54	201,5	180	8
K0128.418	reamed hole with slot	3	-	18	-	35	45	24	30	42	6	21	4	51	70	255,5	230	8
K0128.420	reamed hole with slot	3	-	20	-	35	45	24	30	42	6	21	4	51	70	255,5	230	8

## Ratchet levers

### Overview of items

Order No.	Thread type	Size	X	Reamed hole H7 with DIN 6885-1 keyway	Square socket SW	D	D1	D2	D3	H	H1	H2	H3	C	A	A1=handle length	E	No. of index slots
K0128.422	reamed hole with slot	4	-	22	-	42	56	28	35	47	6	23,5	4	61	80	330,5	300	9
K0128.425	reamed hole with slot	4	-	25	-	42	56	28	35	47	6	23,5	4	61	80	330,5	300	9
K0128.427	reamed hole with slot	4	-	27	-	42	56	28	35	47	6	23,5	4	61	80	330,5	300	9
K0128.430	reamed hole with slot	5	-	30	-	60	75	32	38	53	7,5	26,5	5	82	110	441	400	11
K0128.436	reamed hole with slot	5	-	36	-	60	75	32	38	53	7,5	26,5	5	82	110	441	400	11
K0128.510	square socket	1	-	-	10	22	33	17	22	31	4,5	15,5	3	36	48	168	150	7
K0128.512	square socket	1	-	-	12	22	33	17	22	31	4,5	15,5	3	36	48	168	150	7
K0128.513	square socket	2	-	-	13	27	38	20	26	38	6	19	4	43	54	201,5	180	8
K0128.514	square socket	2	-	-	14	27	38	20	26	38	6	19	4	43	54	201,5	180	8
K0128.517	square socket	3	-	-	17	35	45	24	30	42	6	21	4	51	70	255,5	230	8
K0128.519	square socket	4	-	-	19	42	56	28	35	47	6	23,5	4	61	80	330,5	300	9
K0128.520	square socket	4	-	-	20	42	56	28	35	47	6	23,5	4	61	80	330,5	300	9
K0128.522	square socket	4	-	-	22	42	56	28	35	47	6	23,5	4	61	80	330,5	300	9
K0128.524	square socket	4	-	-	24	42	56	28	35	47	6	23,5	4	61	80	330,5	300	9
K0128.530	square socket	5	-	-	30	60	75	32	38	53	7,5	26,5	5	82	110	441	400	11
K0128.532	square socket	5	-	-	32	60	75	32	38	53	7,5	26,5	5	82	110	441	400	11