

# Horizontal Toggle Clamp

Part No. GH-20300



## Product Description

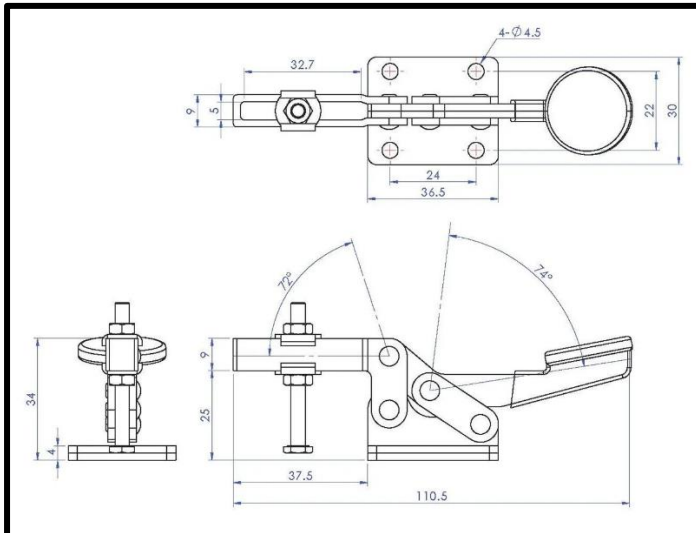
Horizontal Toggle Clamp Flat Base  
Slotted Arm Size 30daN

## Key Features

Overall Height:	34mm
Underarm Height:	25mm
Arm Length:	37.5mm
Holding Force:	30daN

## Other Features

Arm Opens	72°
Handle Opens	74°
Weight:	0.102Kg



## Material

Toggle Clamp:	Zinc Plated Mild Steel
Spindle:	Zinc Plated Mild Steel
Handle:	uPVC
Flanged Washer:	Zinc Plated Mild Steel

## What's In The Bag?

Toggle Clamp:	GH-20300
Spindle:	SA-044007
Flanged Washer:	2x FW-100



[goodhanduk.co.uk](http://goodhanduk.co.uk)

01908 221 151

Horizontal Toggle Clamp

Part No. GH-20300



[goodhanduk.co.uk](http://goodhanduk.co.uk)

01908 221 151