

Hinges weldable, stainless steel

Item description/product images



Description

Material:

Stainless steel 1.4404.

Version:

Satin finished.

Note:

The hinges are made of weldable profile steel.

The pin is fixed into the lower part of the hinge.

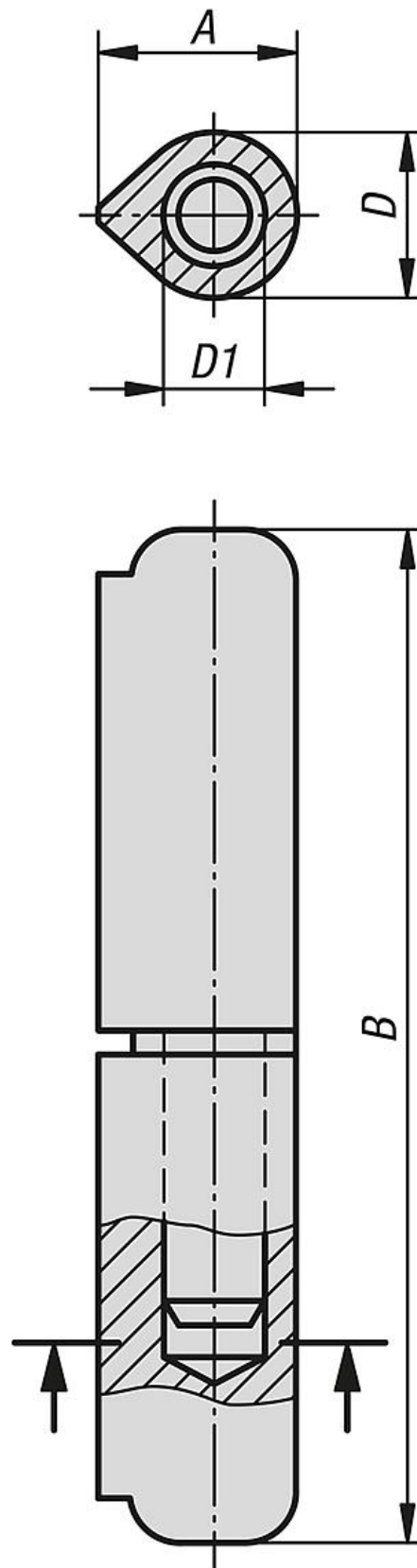
The differing steel qualities of the weld and the beam onto which the hinge is welded must be at least equal to or better than:

S235 JR+AR acc. to EN 10025-2:2004-10

DIN 8563 part 3 or Fe E 235 acc. to SIA 161

Advantages:

Resistant to acid and salt water



Hinges weldable, stainless steel

Overview of items

Hinges weldable, stainless steel

Order No.	A	B	D	D1
K1337.016080	20	80	16	10
K1337.016100	20	100	16	10
K1337.016120	20	120	16	11