

Revolving taper grips

Item description/product images



Description

Material:

Black duroplastic PF 31.

Axle and threaded bush in galvanized steel or in stainless steel, natural finish.

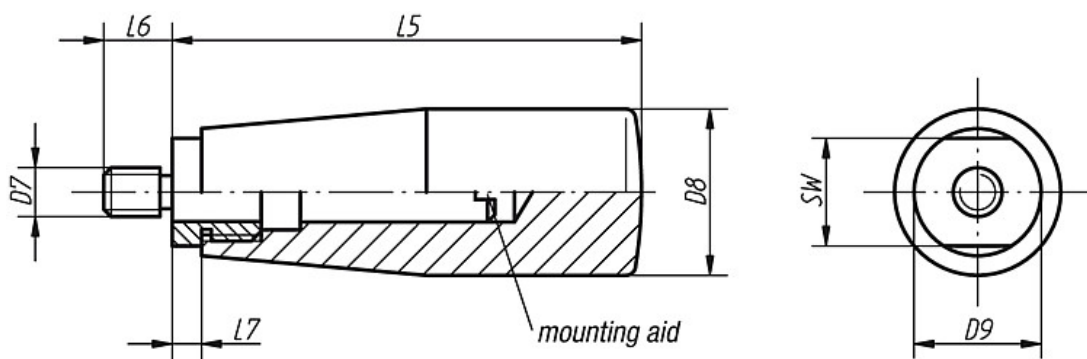
Surface finish:

Deburred and high-polish finish.

Note:

In order to assemble, unscrew the axle.

Drawings



Overview of items

Order No. axle in steel	Order No. axle in stainless steel	Size	D7	D8	D9	L5	L6	L7	SW
K0170.105007	K0170.1105007	1	M5	17	15	51	7	5	13
K0170.206008	K0170.1206008	2	M6	23	18	68	8	6	16
K0170.208009	K0170.1208009	2	M8	23	18	68	9	6	16
K0170.310011	K0170.1310011	3	M10	28	21	77	11	7	19