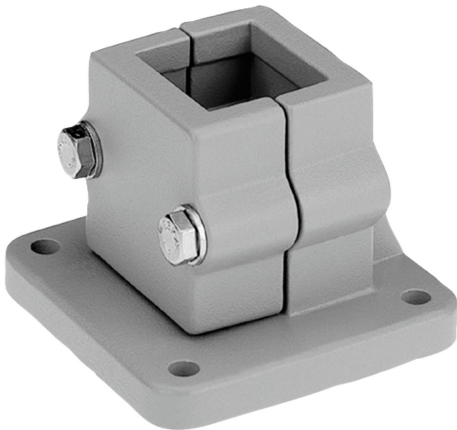


## Tube clamps base aluminium

### Item description/product images



### Description

**Material:**

Cast aluminium.  
Screws and nuts steel.

**Version:**

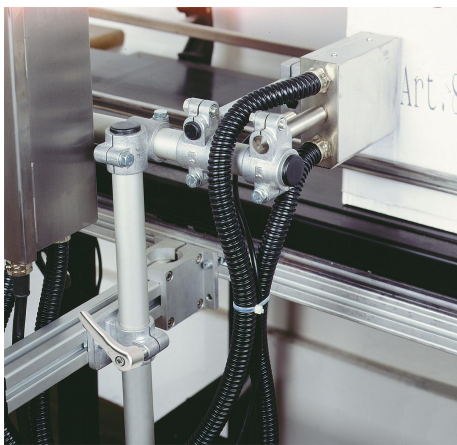
Vibratory ground.  
Screws and nuts electro zinc-plated.

**On request:**

Lever for locking and other sizes for square tube.

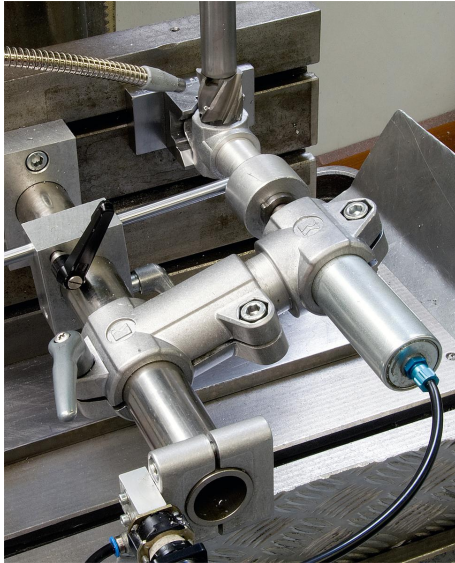
**Accessory:**

- Round and square tubes K0493

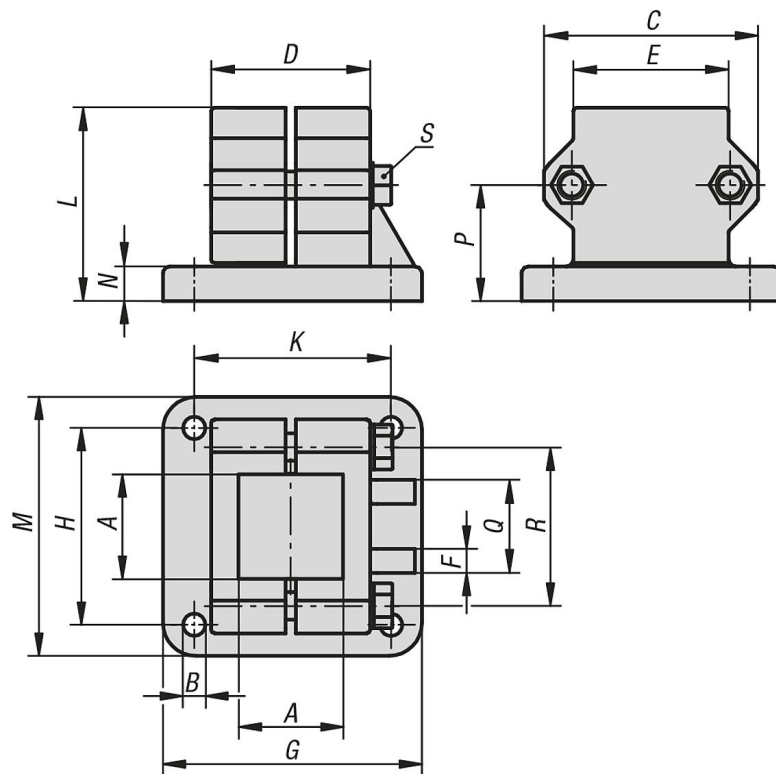


# Tube clamps base aluminium

## Item description/product images



## Drawings



## Overview of items

### Tube clamps base, aluminium

| Order No.  | A    | B | C  | D  | E  | F | G   | H  | K  | L  | M   | N  | P    | Q  | R  | S     |
|------------|------|---|----|----|----|---|-----|----|----|----|-----|----|------|----|----|-------|
| K0478.5230 | 30,3 | 7 | 62 | 45 | 45 | 5 | 75  | 57 | 57 | 56 | 75  | 10 | 33,5 | 25 | 46 | M8x45 |
| K0478.5240 | 40,4 | 9 | 75 | 60 | 60 | 5 | 100 | 76 | 76 | 73 | 100 | 12 | 43   | 32 | 57 | M8x60 |

