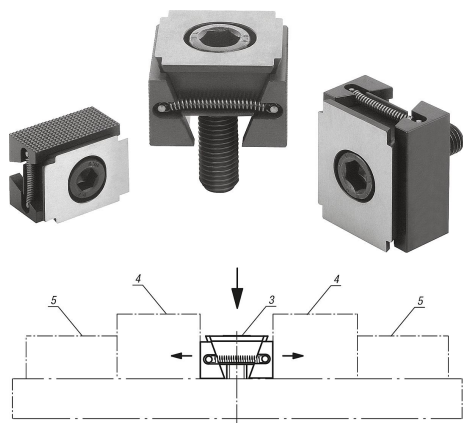


Wedge clamps jaw face smooth or serrated

Item description/product images



Description

Material:

Wedge and jaw segments carbon steel.

Version:

Wedge and jaw segments hardened, black.

Note:

The functioning principle make the wedge clamps ideal for series clamping. The wedge form can exert high clamping forces.

These wedge clamps can be mounted in grid holes or T-slots. Tightening the socket screw moves the wedge down and the jaws out pressing the workpieces against the fixtures fixed stops.

The wedge has a slightly elongated hole allowing for movement to compensate for tolerances.

Spread width:

M8 = ± 0.5 mm

M10 = ± 1.0 mm

M12 = ± 1.0 mm

M16 = ± 1.5 mm

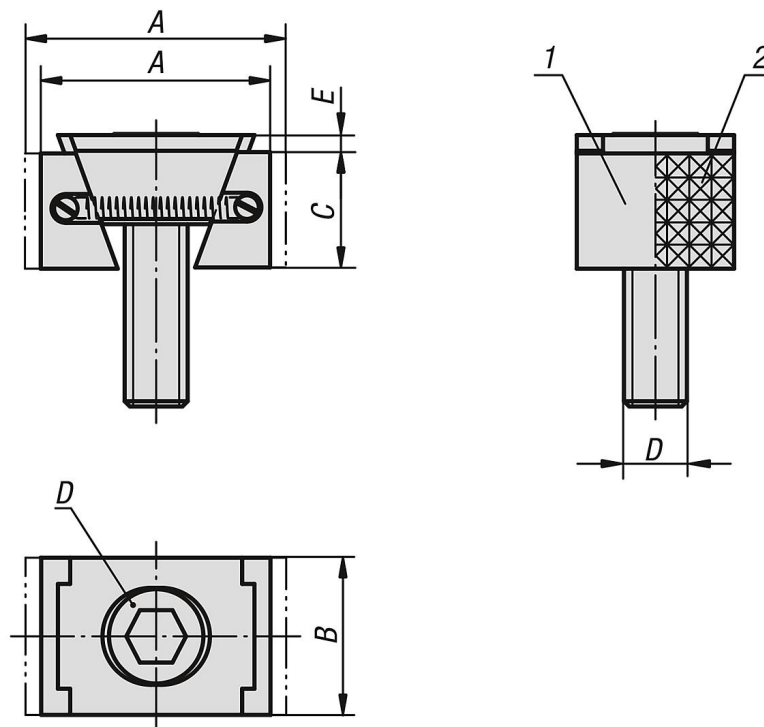
Drawing reference:

D) DIN 6912 cap screw

- 1) Jaw face smooth
- 2) Jaw face serrated
- 3) Wedge clamps
- 4) Workpiece
- 5) Fixed stop

Wedge clamps jaw face smooth or serrated

Drawings



Overview of items

Wedge clamps, narrow version

Order No.	Version 1	A min.	A max.	B	C	D	E	Clamping force max. kN	Tightening torque max. Nm
K0039.1108	smooth	30,5	33,5	24	15	M8X25	2	15	25
K0039.1110	smooth	32	37	28	19	M10X25	3,5	20	49
K0039.1112	smooth	44	49,5	30	22	M12X40	3,5	30	85
K0039.1116	smooth	55	62	40	29	M16X60	4	50	210
K0039.2108	serrated	30,5	33,5	24	15	M8X25	2	15	25
K0039.2110	serrated	32	37	28	19	M10X25	3,5	20	49
K0039.2112	serrated	44	49,5	30	22	M12X40	3,5	30	85
K0039.2116	serrated	55	62	40	29	M16X60	4	50	210
K0039.1208	smooth	30,5	33,5	30	15	M8X25	2	15	25
K0039.1210	smooth	32	37	38	19	M10X25	3,5	20	49
K0039.1212	smooth	44	49,5	48	22	M12X40	3,5	30	85
K0039.1216	smooth	55	62	48	29	M16X60	4	50	210
K0039.2208	serrated	30,5	33,5	30	15	M8X25	2	15	25
K0039.2210	serrated	32	37	38	19	M10X25	3,5	20	49
K0039.2212	serrated	44	49,5	48	22	M12X40	3,5	30	85
K0039.2216	serrated	55	62	48	29	M16X60	4	50	210