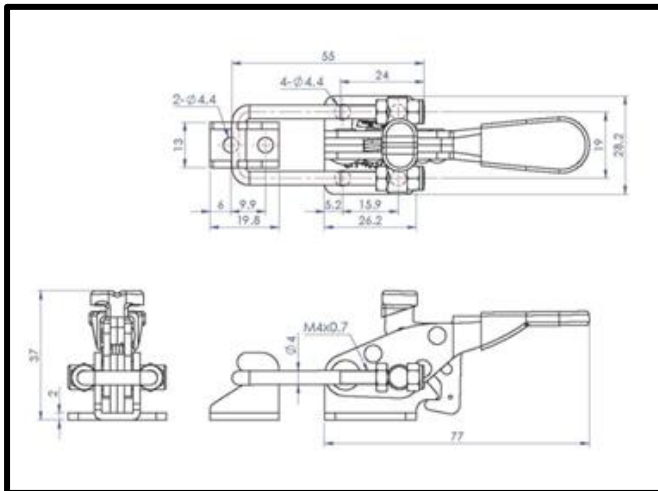
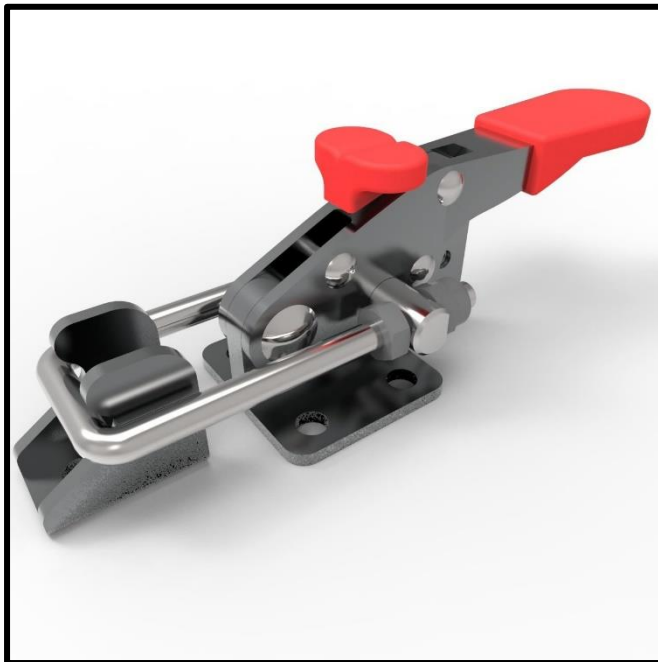


Latch Toggle Clamp

Part No. GH-40323-R



Product Description

Horizontal Latch Toggle Clamp
With Safety Lock Size 163Kg

Key Features

Overall Height: 37mm
Catch Plate Width: 13mm
Holding Force: 163daN

Other Features

Weight: 0.09Kg
Safety Lock

Material

Toggle Clamp: Zinc Plated Mild Steel
U Bar: Zinc Plated Mild Steel
Latch Plate: Zinc Plated Mild Steel

What's In The Bag?

Toggle Clamp: GH-40323-R
Latch Plate: GH-40323-LP
U Bar: GH-40323-UB



goodhanduk.co.uk

01908 221 151