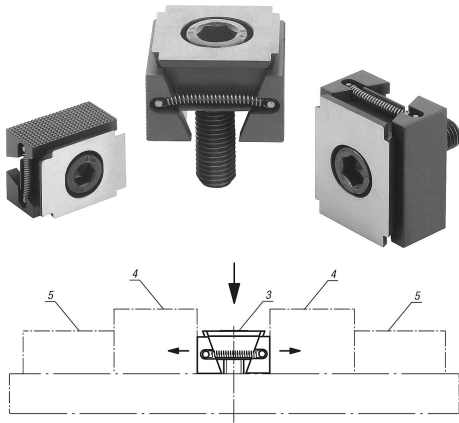


Wedge clamps jaw face smooth or serrated

Item description/product images



Description

Material:

Wedge and jaw segments carbon steel.

Version:

Wedge and jaw segments hardened, black.

Note:

The functioning principle make the wedge clamps ideal for series clamping. The wedge form can exert high clamping forces.

These wedge clamps can be mounted in grid holes or T-slots. Tightening the socket screw moves the wedge down and the jaws out pressing the workpieces against the fixtures fixed stops.

The wedge has a slightly elongated hole allowing for movement to compensate for tolerances.

Spread width:

M8 = ± 0.5 mm

M10 = ± 1.0 mm

M12 = ± 1.0 mm

M16 = ± 1.5 mm

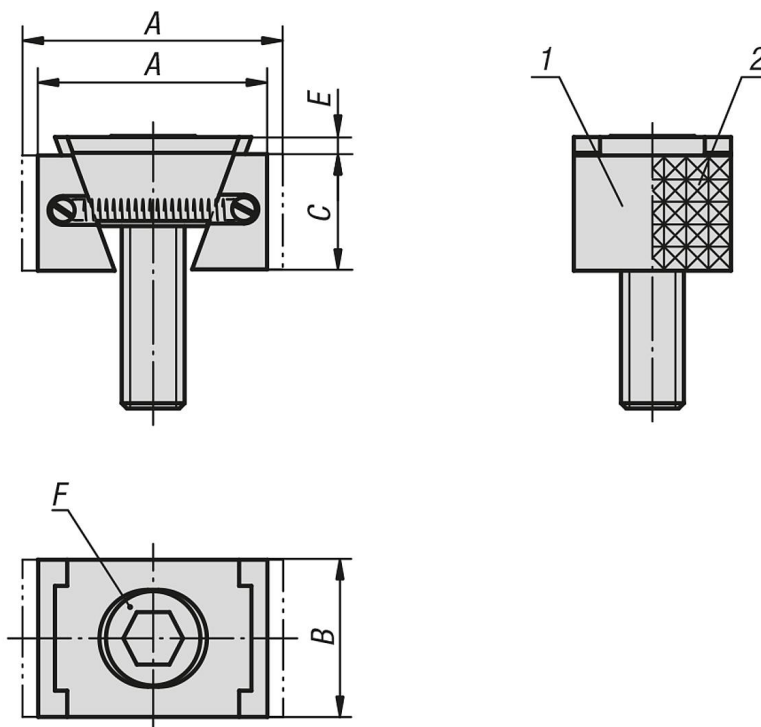
Drawing reference:

- 1) Jaw face smooth
- 2) Jaw face serrated

- 3) Wedge clamps
- 4) Workpiece
- 5) Fixed stop

Wedge clamps jaw face smooth or serrated

Drawings



Overview of items

Wedge clamps, narrow version

Order No.	Version	A min.	A max.	B	C	E	F DIN 6912 cap screw	Clamping force kN	Tightening torque Nm
K0039.1108	smooth	30,5	33,5	24	15	2	M8x25	15	25
K0039.1208	smooth	30,5	33,5	30	15	2	M8x25	15	25
K0039.1110	smooth	32	37	28	19	3,5	M10x25	20	49
K0039.1210	smooth	32	37	38	19	3,5	M10x25	20	49
K0039.1112	smooth	44	49,5	30	22	3,5	M12x40	30	85
K0039.1212	smooth	44	49,5	48	22	3,5	M12x40	30	85
K0039.1216	smooth	55	62	48	29	4	M16x60	50	210
K0039.1116	smooth	55	62	40	29	4	M16x60	50	210
K0039.2108	serrated	30,5	33,5	24	15	2	M8x25	15	25
K0039.2208	serrated	30,5	33,5	30	15	2	M8x25	15	25
K0039.2210	serrated	32	37	38	19	3,5	M10x25	20	49
K0039.2110	serrated	32	37	28	19	3,5	M10x25	20	49
K0039.2112	serrated	44	49,5	30	22	3,5	M12x40	30	85
K0039.2212	serrated	44	49,5	48	22	3,5	M12x40	30	85
K0039.2216	serrated	55	62	48	29	4	M16x60	50	210
K0039.2116	serrated	55	62	40	29	4	M16x60	50	210