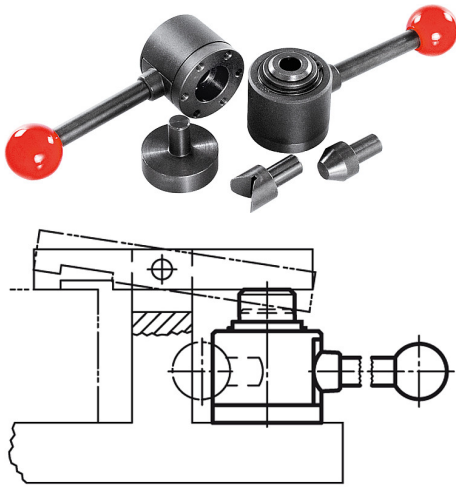


# „actima“ clamping device

## Item description/product images



## Description

### Material, surface finish:

Steel black oxide finish;  
housing in black thermoplastic;  
ball knob in red duroplastic PF 31;  
accessories in steel black oxide finish

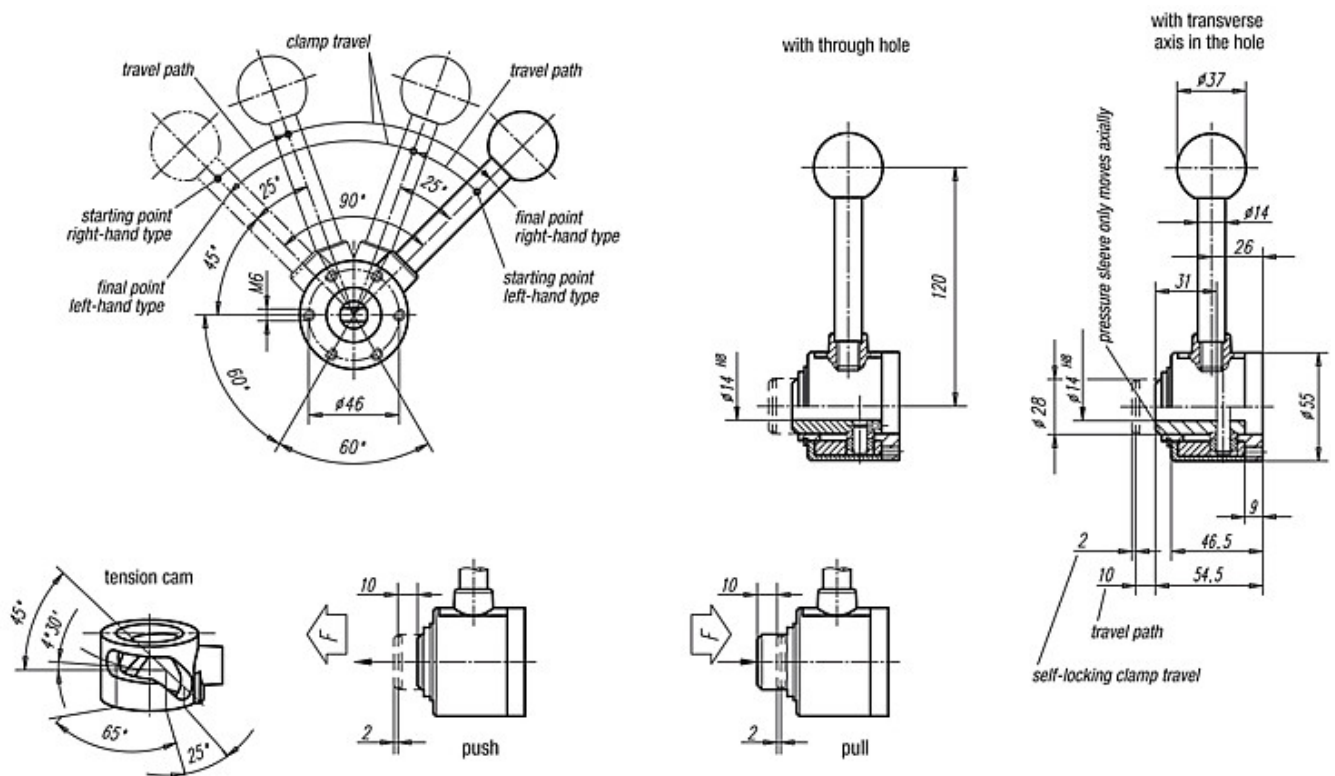
### Note:

The travel path is 10 mm. Self-locking occurs in any position within only 2 mm of clamp travel. Thus workpieces with tolerances of up to 1.5 mm can be safely clamped. The "actima" clamping device can be fitted in any horizontal or vertical position.

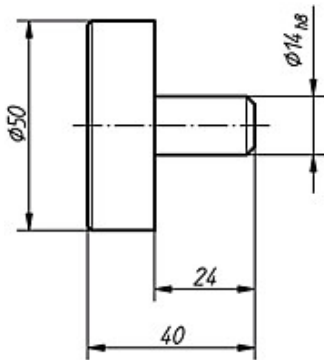
Standard parts allow further applications. They are available as optional accessories. All parts of the cam system subject to heavy loads are case-hardened (pressure sleeve and accessories only if specified).

The maximum permissible clamping force is approximately 4905 N.

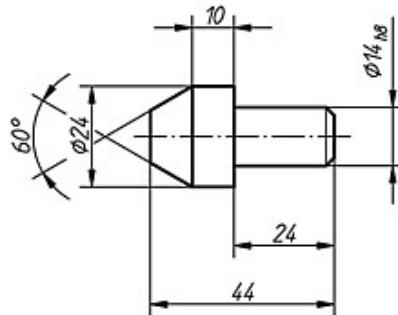
## Drawings



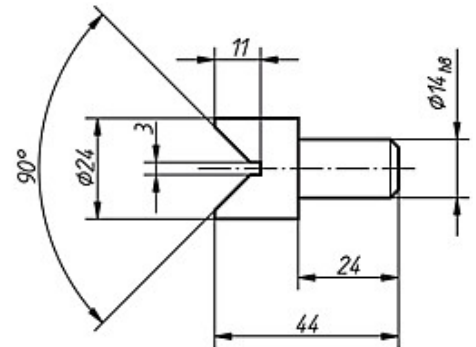
## Drawings



disc



taper



vee-block

## Overview of items

| Order No. | Surface finish    | Approx. weight<br>kg |
|-----------|-------------------|----------------------|
| K0020.10  | right-hand / push | 0,865                |
| K0020.15  | right-hand / pull | 0,865                |
| K0020.20  | left-hand / push  | 0,865                |
| K0020.25  | left-hand / pull  | 0,865                |

| Order No. | Surface finish    | Approx. weight<br>kg |
|-----------|-------------------|----------------------|
| K0020.30  | right-hand / push | 0,855                |
| K0020.35  | right-hand / pull | 0,855                |
| K0020.40  | left-hand / push  | 0,855                |
| K0020.45  | left-hand / pull  | 0,855                |

| Order No. | Product   | Approx. weight<br>kg |
|-----------|-----------|----------------------|
| K0020.02  | disc      | 0,275                |
| K0020.03  | taper     | 0,085                |
| K0020.04  | vee-block | 0,080                |