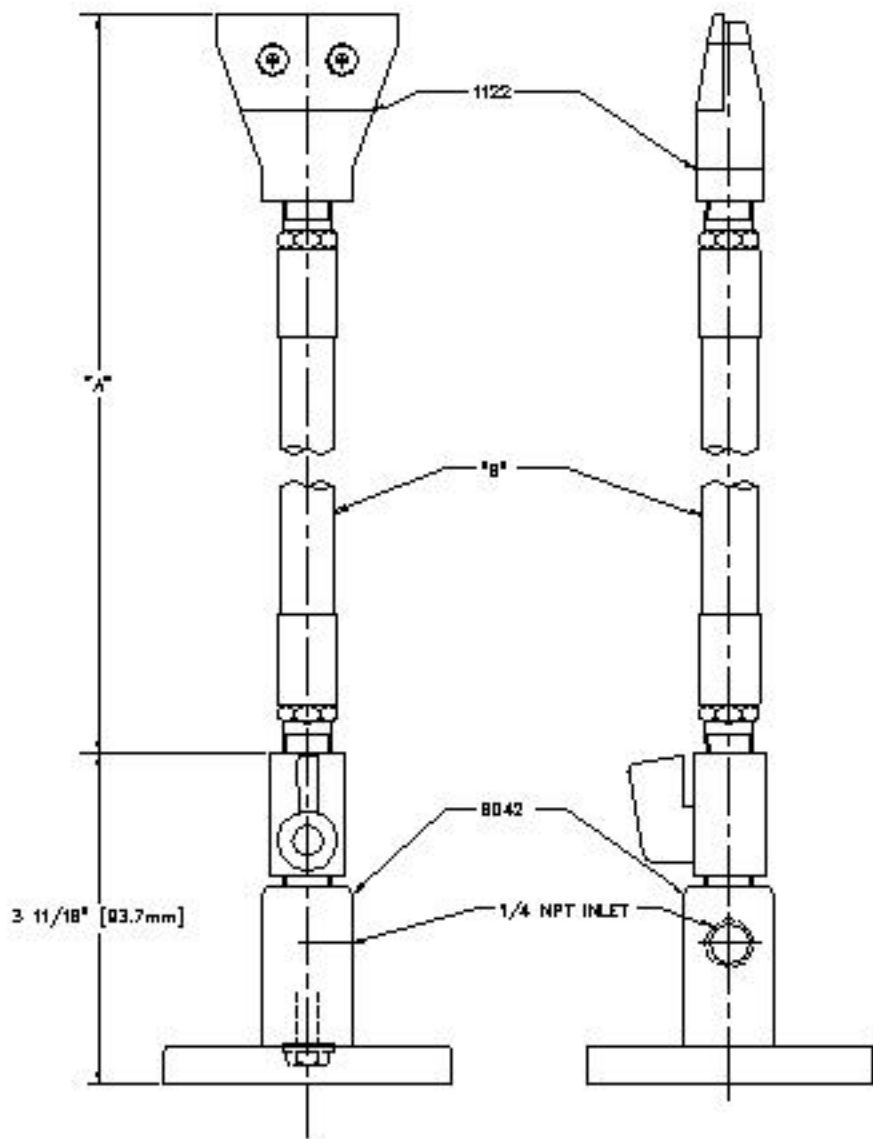


PART	"A"	"B"
1122-9306	8 3/16" [208mm]	9206
1122-9312	14 3/16" [360.4mm]	9212
1122-9318	20 3/16" [512.0mm]	9218
1122-9324	28 3/16" [685.2mm]	9224
1122-9330	32 3/16" [817.6mm]	9230
1122-9336	38 3/16" [970mm]	9236



COPYRIGHT 2003 - EXAIR CORPORATION

EXAIR CORPORATION		
TITLE 2 IN SUPER AIR NOZZLE, STAYSET HOSE, WAG BASE		
DATE 11/24/03	DRAWING NUMBER DEM-1122-9306 TO 1122-9336	SCALE 1 : 1