

# Vent screws brass with check valve

## Item description/product images



### Description

**Material:**  
 Housing and cap brass.  
 Spring stainless steel.  
 Lift disc aluminium.  
 O-ring rubber (NBR).

**Version:**  
 Flat seal asbestos-free.

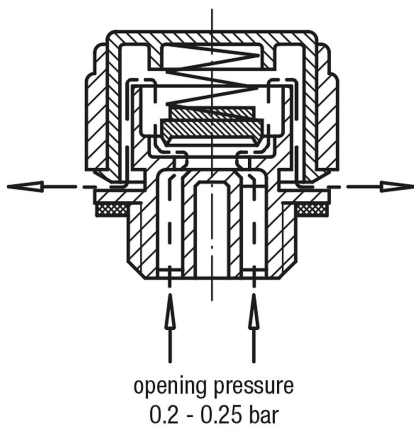
**Note:**  
 Opening pressure 0.3 bar ( $\pm 0.1$ ).

**Functional principle:**  
 See K0459 vent screws with check valve.

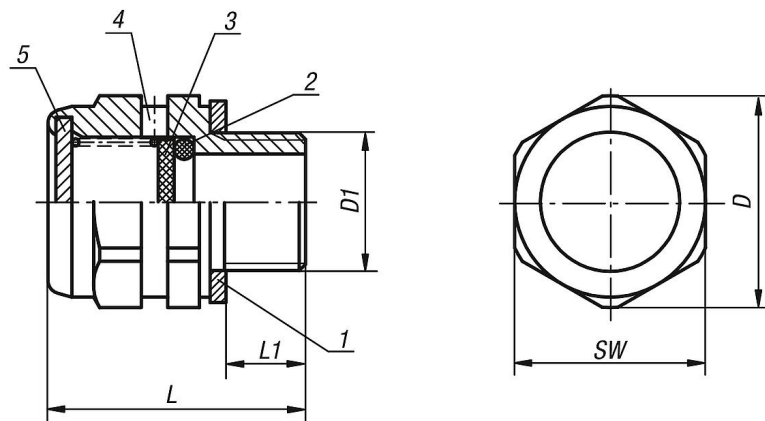
### Drawing reference:

- 1) flat seal
- 2) O-ring
- 3) lift disc
- 4) vent hole 2x
- 5) cap

### Operating principle



## Drawings



## Overview of items

### Vent screws brass with check valve

Order No.	D	D1	L	L1	SW
K0461.20014	20	G1/4	24,3	7,5	18
K0461.24038	24,5	G3/8	24,5	8,5	22
K0461.30012	30	G1/2	24,5	8,5	27

