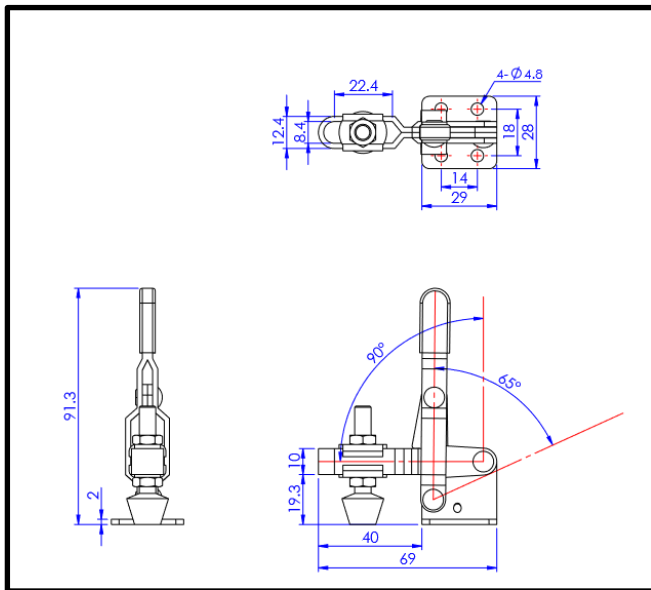


Vertical Toggle Clamp

Part No. GH-102-B



Product Description

Vertical Toggle Clamp Flat Base
Slotted Arm Size 100Kg

Key Features

Overall Height: 91.3mm
Underarm Height: 19.3mm
Arm Length: 40mm
Holding Force: 100Kg

Other Features

Arm Opens: 90°
Handle Opens: 65°
Weight: 0.115Kg

Material

Clamp: Zinc Plated Mild Steel
Spindle: Neoprene Tipped Steel
Handle: uPVC

What's In The Bag?

GH-102-B: Toggle Clamp
2x FW-141: Flanged Washers For 6mm Spindle
FC-064410: M6x44mm Neoprene Tipped Spindle
With Nuts



goodhanduk.co.uk

01908 221 151