

Half Turn Toggle Latches Part No. CS-26228



Product Description

Half Turn Latch In Stainless Steel With
Padlock Hole L=62mm

Key Features

Overall Length: 62mm
Load Capacity: 30daN

Other Features

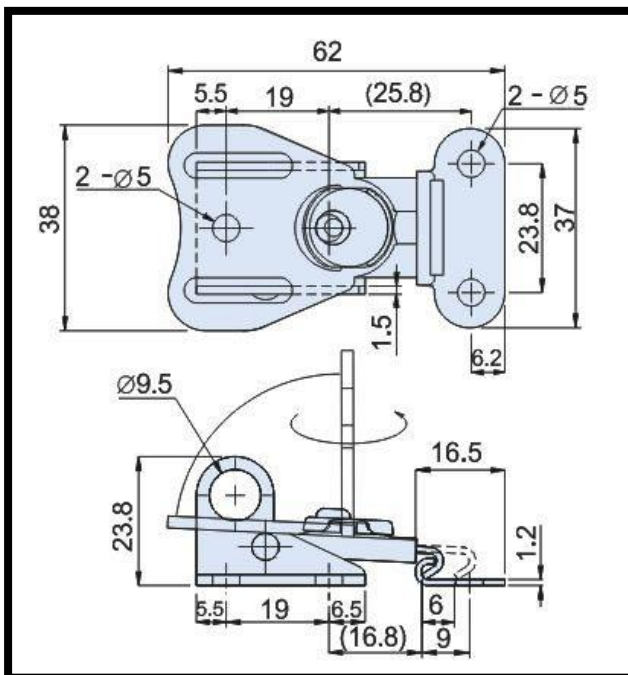
Weight: 0.053Kg

Material

Toggle Latch: Stainless Steel

What's In The Bag?

Toggle Latch: CS-26228
Latch Plate:



goodhanduk.co.uk

01908 221 151