

Plug connector leg

Item description/product images



Description

Material, surface finish:

Polyamide PA, black.

Socket head screw to DIN 6912 and hexagon nut DIN 934, galvanized steel.

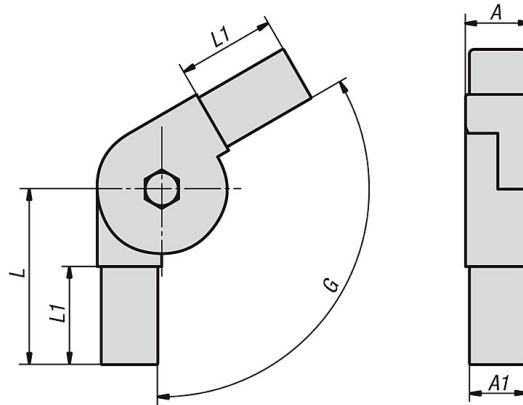
Note:

The plug connectors are simply inserted into the corresponding square tube. They can be disassembled and used again. The specified adjustment range can be aligned continuously.

Accessory:

- Square tubes K0627
- Square tubes with a bridge K0628

Drawings



Overview of items

Order No.	A	A1	L	L1	G	Suitable for square tubes
K0625.1251511	25	22	68	38	0° - 190°	25 x 25 x 1,5
K0625.1251512	25	22	59	38	45° - 195°	25 x 25 x 1,5