

Hinges with oblong holes in die cast zinc

Item description/product images



Description

Material:

Die cast zinc; axle stainless steel; washers thermoplastic

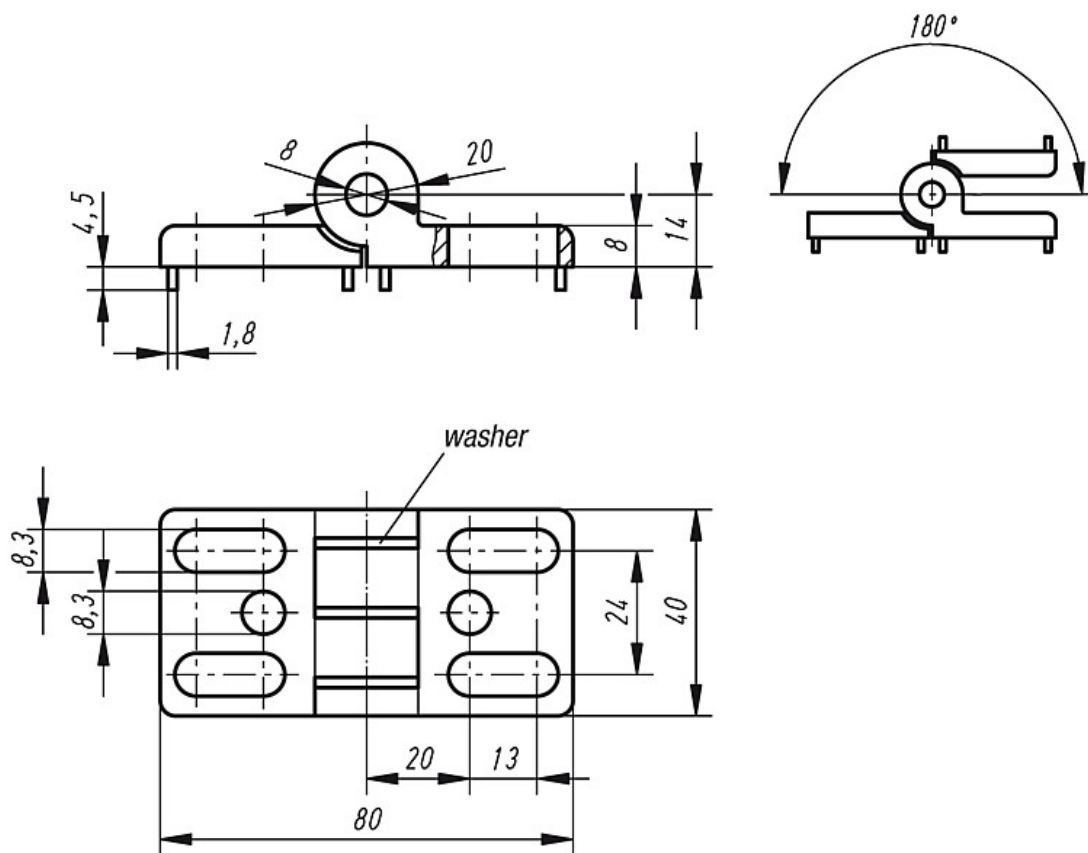
Surface finish:

Hinge black powder-coated; axle natural finish; washers black

Note:

Horizontal adjustment of the hinges permits an optimal location.

Drawings



Overview of items

| Order No. | Guide tabs for slot | Load bearing capacity N | Approx. weight kg |
|----------------|---------------------|-------------------------|-------------------|
| K0441.402020 | - | 2500 | 0,175 |
| K0441.40202008 | 8 | 2500 | 0,175 |
| K0441.40202010 | 10 | 2500 | 0,175 |