

Vertical Toggle Clamp

Part No. GH-12502-BB



Product Description

Blackodised Vertical Toggle Clamp
Flat Base Slotted Arm Size 250Kg

Key Features

Overall Height: 178mm
Underarm Height: 32mm
Arm Length: 69.7mm
Holding Force: 250Kg

Other Features

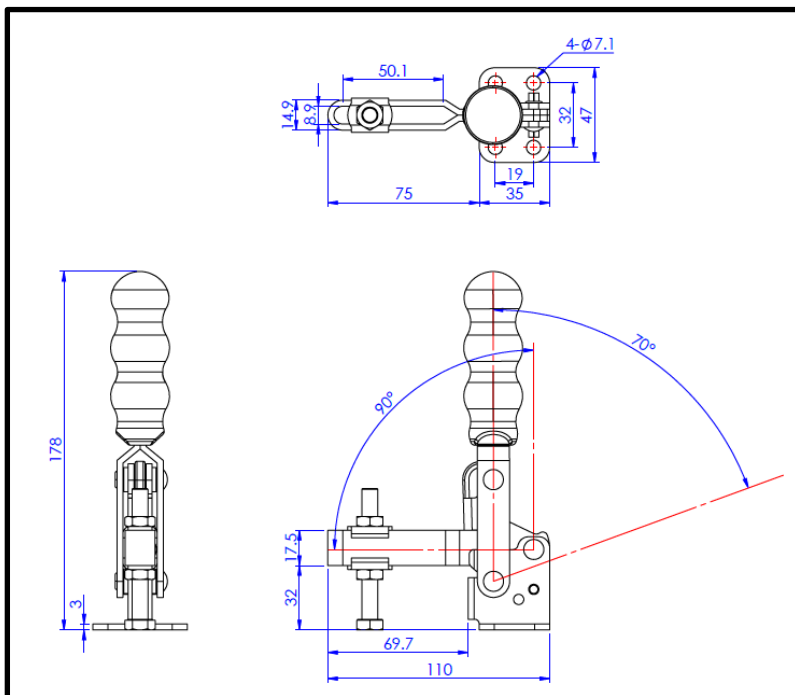
Arm Opens: 90°
Handle Opens: 70°
Weight: 0.44Kg

Material

Clamp: Zinc Plated Mild Steel
Spindle: Zinc Plated Mild Steel
Handle: uPVC
Neoprene Cap: Neoprene

What's In The Bag?

GH-12502-BB: Toggle Clamp
2x FW-516: Flanged Washers For 8mm Spindle
SA-086512: Blackodised M8x65mm Spindle With Nuts
NC-08 – Neoprene Cap For M8 Spindle



goodhanduk.co.uk

01908 221 151