

Hook Toggle Clamp

Part No. GH-40200-SS



Product Description

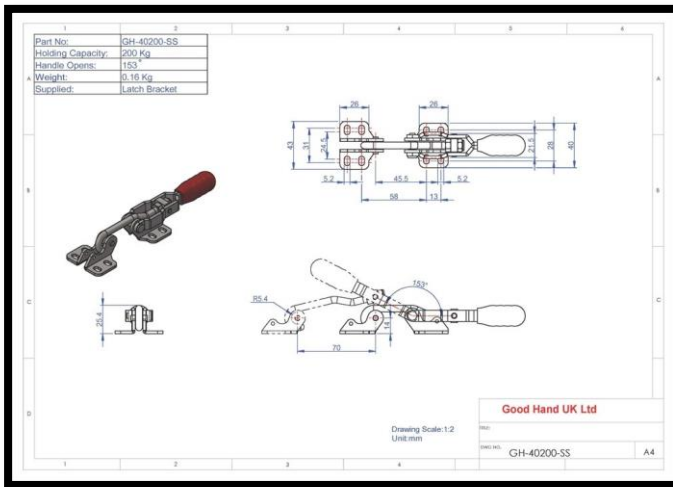
Hook Toggle Clamp With Latch Plate Size 200daN

Key Features

Overall Height: 25.4mm
Length: 167mm
Hook Diameter: 6mm
Holding Force: 200daN

Other Features

Weight: 0.16Kg



Material

Toggle Clamp: Stainless Steel
Hook: Stainless Steel
Latch Plate: Stainless Steel

What's In The Bag?

Toggle Clamp: GH-40200 -SS
Latch Plate: GH-40200-LPSS



goodhanduk.co.uk

01908 221 151