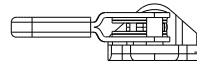
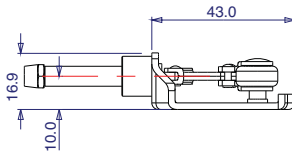
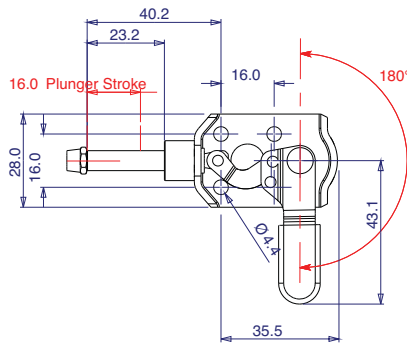
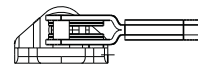
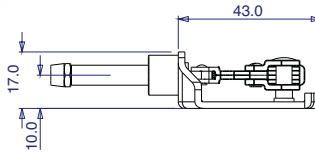
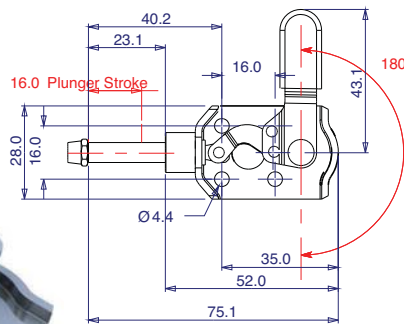
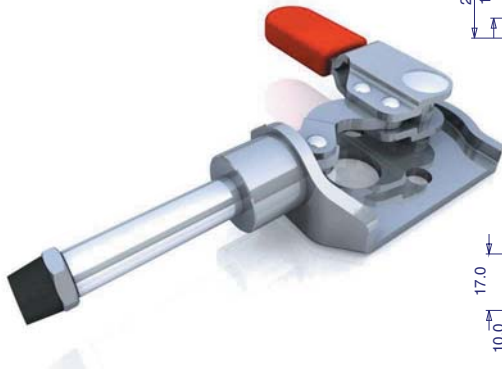


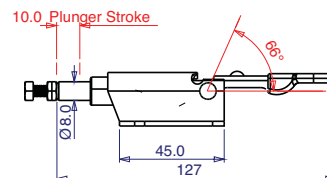
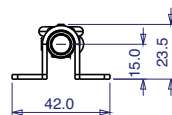
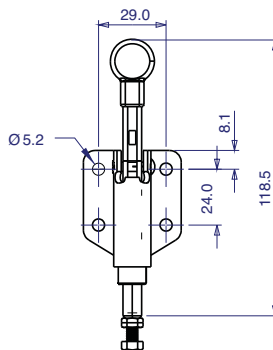
► Low Profile Flat Base



Part No:	GH-301-CML
Holding Force:	45Kg
Plunger Stroke:	16mm
Handle Opens:	190°
Weight:	0.05Kg
Spindle Supplied:	FC-041807
Flanged Washers Supplied:	-

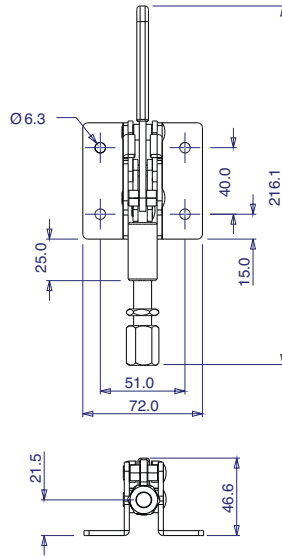


Part No:	GH-301-CMR
Holding Force:	45Kg
Plunger Stroke:	16mm
Handle Opens:	190°
Weight:	0.05Kg
Spindle Supplied:	FC-041807
Flanged Washers Supplied:	-

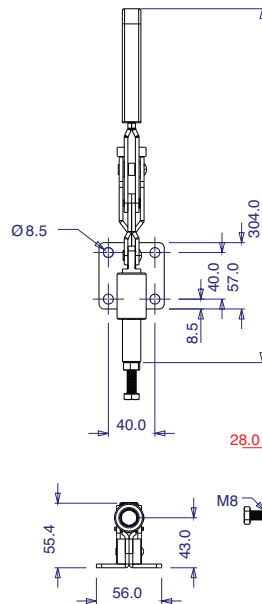
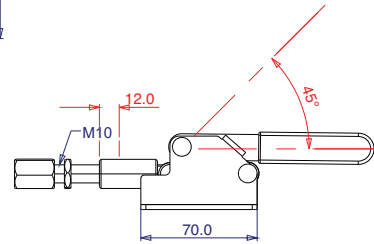


Part No:	GH-36070M
Holding Force:	50Kg
Plunger Stroke:	10mm
Handle Opens:	66°
Weight:	0.1Kg
Spindle Supplied:	SA-051508
Flanged Washers Supplied:	-

► Low Profile Flat Base



Part No:	GH-302-DM
Holding Force:	160Kg
Plunger Stroke:	12mm
Handle Opens:	45°
Weight:	0.45Kg
Spindle Supplied:	-
Flanged Washers Supplied:	-



Part No:	GH-36060M
Holding Force:	300Kg
Plunger Stroke:	28mm
Handle Opens:	76°
Weight:	0.615Kg
Spindle Supplied:	SA-083012
Flanged Washers Supplied:	-

