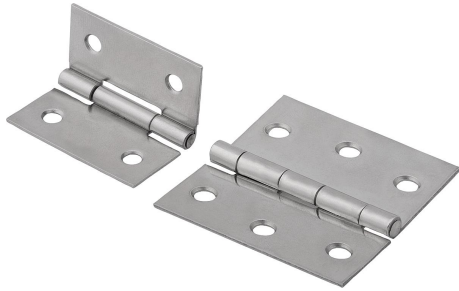


# Hinges steel or stainless steel plate

## Item description/product images



### Description

**Material:**

Steel or stainless steel 1.4301.

**Version:**

Steel electro zinc-plated.

Stainless steel bright.

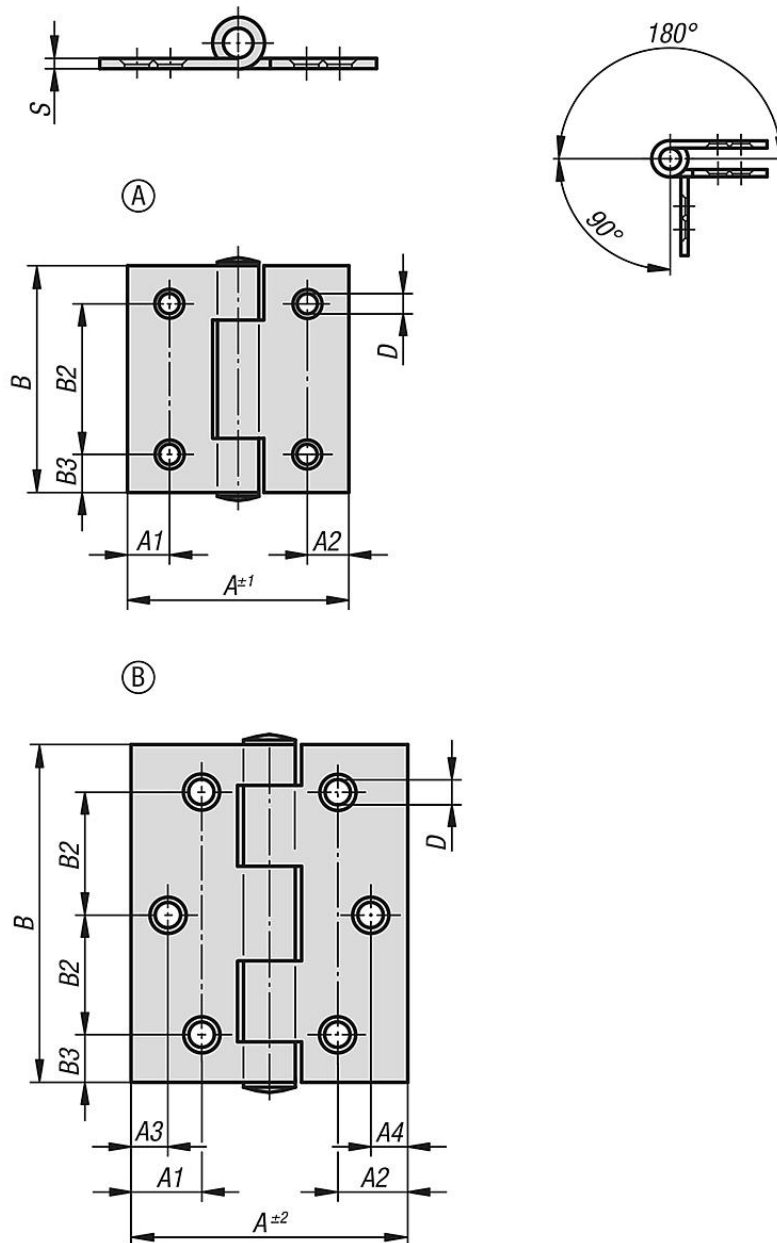
**Note:**

Rolled plate butt hinges.

Pins are riveted.

Screw holes countersunk.

## Drawings



## Hinges steel or stainless steel plate

### Overview of items

#### Hinges, steel or stainless steel plate

| Order No.       | Material        | Form | A1   | A2   | A3 | A4 | A  | B  | B2   | B3  | D   | S    |
|-----------------|-----------------|------|------|------|----|----|----|----|------|-----|-----|------|
| K1082.04201212  | steel           | A    | 8,5  | 8,5  | -  | -  | 40 | 40 | 25   | 7,5 | 4   | 1    |
| K1082.04301515  | steel           | B    | 15   | 15   | 8  | 8  | 60 | 60 | 22,5 | 7,5 | 4,5 | 1,5  |
| K1082.104201212 | stainless steel | A    | 8,5  | 8,5  | -  | -  | 40 | 40 | 25   | 7,5 | 4   | 1    |
| K1082.104251414 | stainless steel | B    | 11   | 11   | 8  | 8  | 50 | 50 | 18   | 7   | 4,5 | 1,25 |
| K1082.104301515 | stainless steel | B    | 15   | 15   | 8  | 8  | 60 | 60 | 22,5 | 7,5 | 4,5 | 1,5  |
| K1082.105401515 | stainless steel | B    | 25,3 | 25,3 | 12 | 12 | 80 | 80 | 30   | 10  | 5,2 | 1,5  |