

# Thrust pads

## Item description/product images



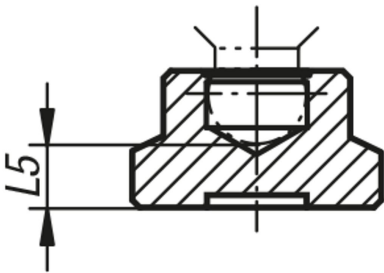
### Description

**Material:**  
Steel.  
PA 6 plastic.

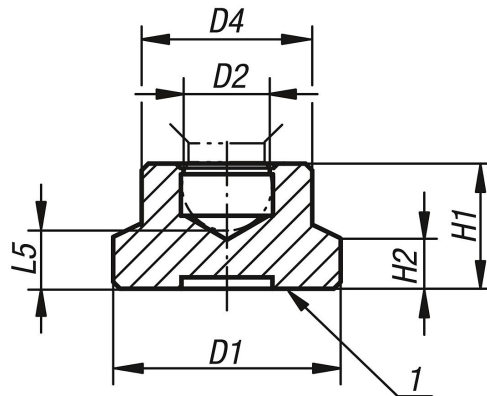
**Version:**  
Black oxidised.  
Black plastic.

**Note:**  
Suitable for grub screws with ballend pin.

**Drawing reference:**  
1) thrust face



## Drawings



## Overview of items

### Thrust pads

Order No.	Form	Main material	D1	D2	D4	H1	H2	L5	Suitable for grub screws
K0393.06	A	steel	15	4,4	8,6	7,6	2,5	3,8	M6
K0393.08	A	steel	18	5,9	12	9	3,5	4,4	M8
K0393.10	A	steel	21	7,9	15	11	4	5	M10

## Thrust pads

### Overview of items

Order No.	Form	Main material	D1	D2	D4	H1	H2	L5	Suitable for grub screws
K0393.12	A	steel	25	7,9	18	13	5	6,9	M12
K0393.206	A	polyamide	15	4,4	8,6	7,6	2,5	3,8	M6
K0393.208	B	polyamide	18	5,9	12	9	3,5	4,4	M8
K0393.210	C	polyamide	21	7,9	15	11	4	5	M10
K0393.212	C	polyamide	25	7,9	18	13	5	6,9	M12