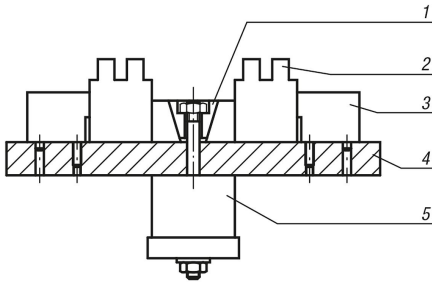
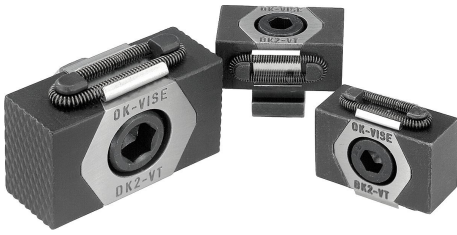


Wedge clamps machinable

Item description/product images



Description

Material:

Body tool steel.

Jaw segments tool steel (30 HRC).

Version:

Body hardened.

Jaw segments black oxidised.

Wedge faces ground.

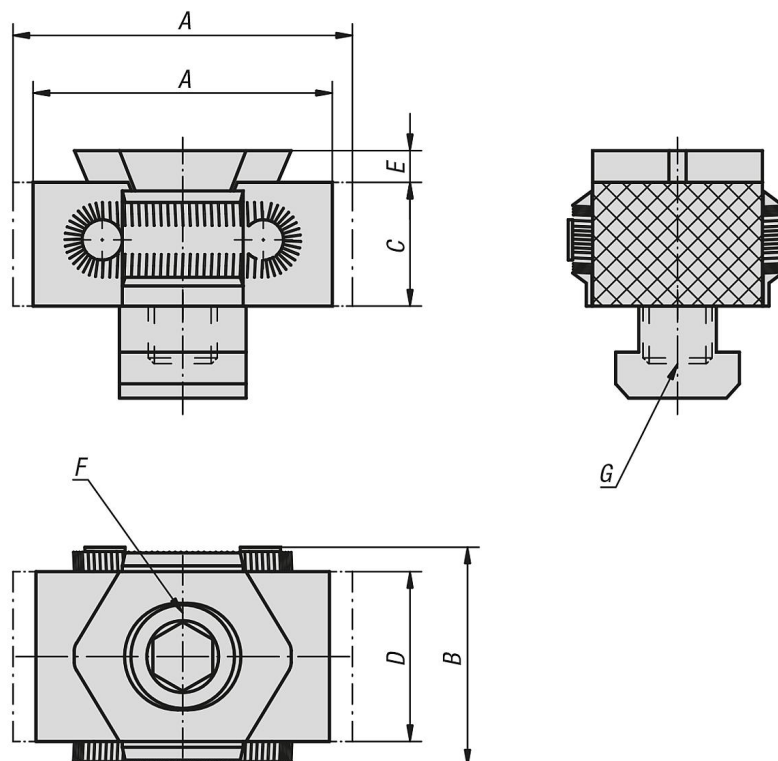
Note:

These wedge clamps have a machining allowance per jaw of 3 mm for version K0041.08 and 5 mm for versions K0041.12 and K0041.16. This extra material allows the jaws to be machined to suit the form of the workpiece. The jaws version K0041.08 and K0041.0810 are not serrated. Spread width: K0041.08 = ± 0.5 mm K0041.12 = ± 1.0 mm K0041.16 = ± 1.5 mm

Drawing reference:

- 1) wedge clamps
- 2) workpiece
- 3) fixed stop
- 4) base plate
- 5) hydraulic/pneumatic cylinder

Drawings



Overview of items

Wedge clamps machinable

Overview of items

Wedge clamps machinable

Order No.	A min.	A max.	B	C	D	E	F Socket head screw DIN 912	G	Clamping force kN	Tightening torque Nm
K0041.08	33	37	29	15	21	2,5	M8x25	for tapped hole	15	25
K0041.0810	33	37	29	15	21	2,5	M8x25	for T-slot 10	15	25
K0041.12	52	59	41	22	30	4	M12x40	for tapped hole	30	85
K0041.1214	52	59	41	22	30	4	M12x30	for T-slot 14	30	85
K0041.16	67	76	56	29	42	5	M16x60	for tapped hole	50	210
K0041.1618	67	76	56	29	42	5	M16x50	for T-slot 18	50	210