

## Taper grips

### Item description/product images



### Description

**Material:**

Duroplastic PF 31, black.

Bush and threaded bolt in steel galvanized.

**Surface finish:**

Deburred and high-polish finish.

**Note:**

The versions K0172.205 and K0172.206 have a bush in copper-plated steel.

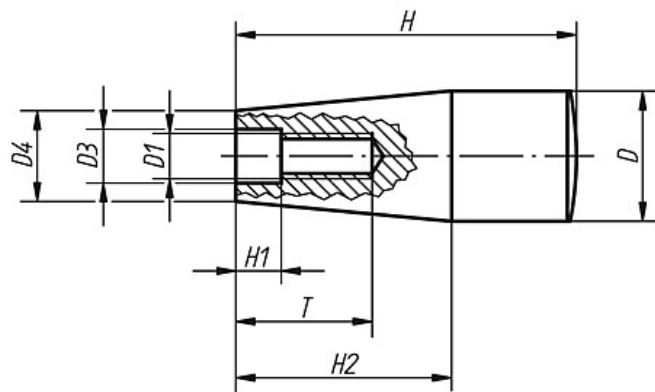
The versions K0172.208 and K0172.2081 have a bush in brass.

**On request:**

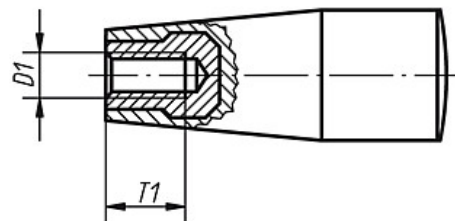
Other colours.

### Drawings

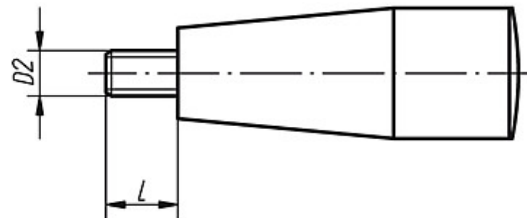
Form C  
with pressed thread



Form E  
with threaded bush



Form F  
with external thread



### Overview of items

Order No.	Form	D	D1	D3	D4	H	H1	H2	T	T1
K0172.106	C	17	M6	6,2	15	45	2	26	14	-
K0172.108	C	17	M8	8,2	13	45	2	26	16	-
K0172.1081	C	23	M8	8,5	18	60	8	38	24	-

## Taper grips

### Overview of items

Order No.	Form	D	D1	D3	D4	H	H1	H2	T	T1
K0172.110	C	29	M10	10,5	21	70	10	42	28	-
K0172.205	E	17	M5	-	15	45	-	26	-	10
K0172.206	E	17	M6	-	15	45	-	26	-	9
K0172.208	E	23	M8	-	18	60	-	38	-	14
K0172.2081	E	28	M8	-	21	70	-	42	-	14

Order No.	Form	D	D2	D4	H	H2	L
K0172.306	F	17	M6	15	45	26	18
K0172.308	F	23	M8	18	60	38	12
K0172.310	F	29	M10	21	70	42	20