

Vertical Toggle Clamp

Part No. GH-101-ASS



Product Description

Stainless Steel Low Profile Toggle
Clamp Size 68daN

Key Features

Overall Height: 36mm
Underarm Height: 12.7mm
Arm Length: 30.8mm
Holding Force: 68daN

Other Features

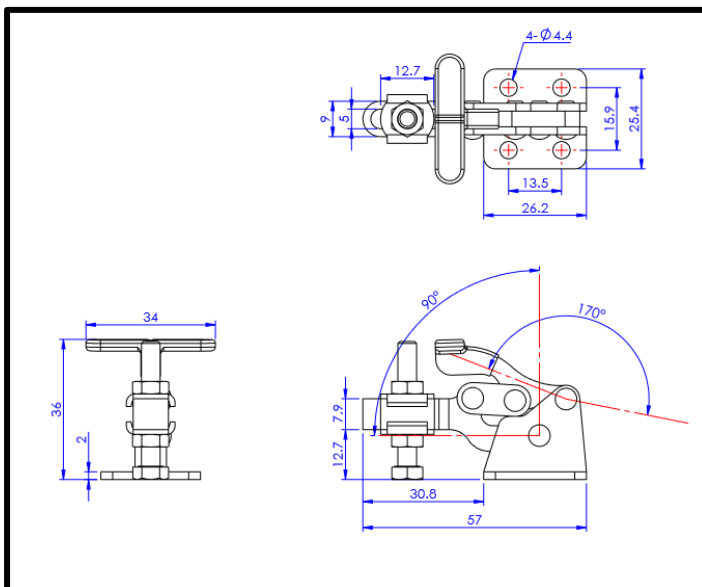
Arm Opens: 90°
Handle Opens: 170°
Weight: 0.06Kg

Material

Toggle Clamp: 304 Stainless Steel
Spindle: 304 Stainless Steel
Handle: uPVC

What's In The Bag?

GH-13005-SS: Toggle Clamp
FW-100-SS: 2x Flanged Washers for M5 Spindle
SA-053008-SS: M5x30mm Stainless Spindle With Nuts



goodhanduk.co.uk

01908 221 151