

Handwheels

Item description/product images



Description

Product description:

The quality of Novo-Grip handwheels is defined by their absolutely secure and precise turning and gripping. Novo-Grip handwheels often equip especially powerful products and as a result they can be used safely.

Material, surface finish:

Anthracite grey thermoplastic.

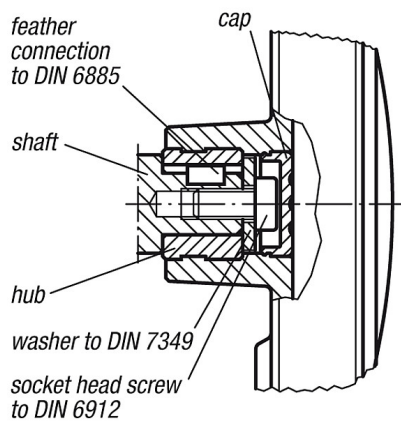
Steel parts black oxide finish.

Note:

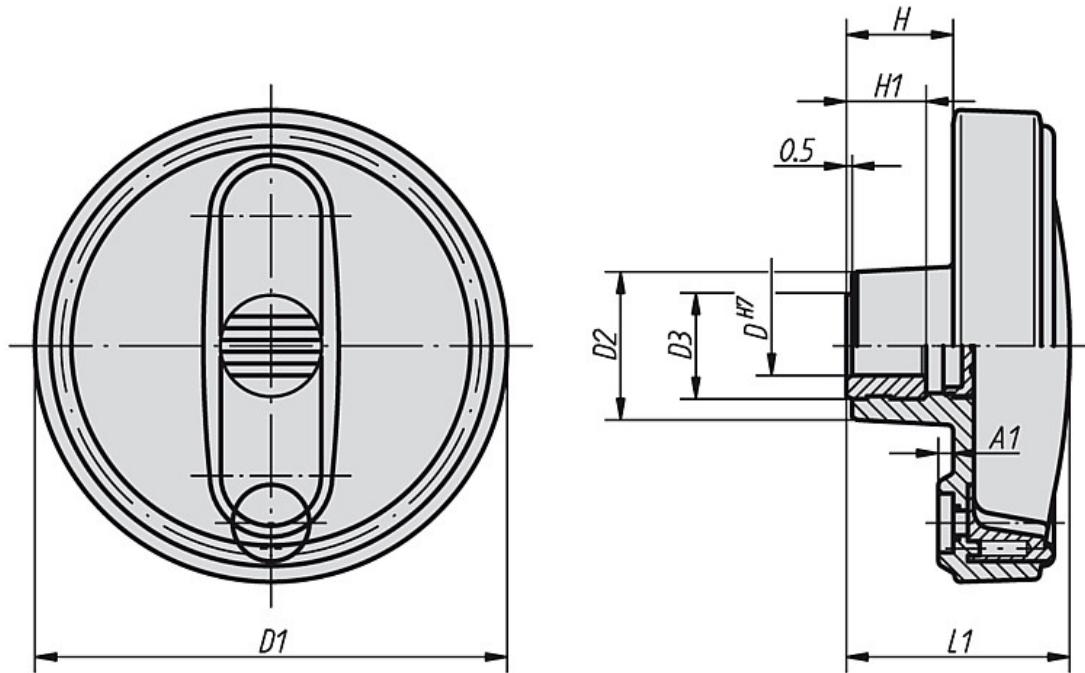
The hub cover is supplied unassembled.

The handwheels can be secured axially to the shaft via feather connection by cross-pinning or with a socket head screw to DIN 6912 and a washer to DIN 7349.

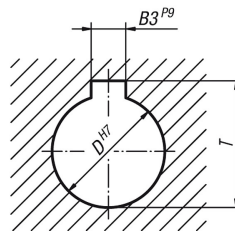
assembly example



Drawings



hub slot according to
DIN 6885-1



Overview of items

Order No. hub without slot	Order No. hub with slot	Size	D	D1	D2	D3	A1	H	H1	L1	B3	T	Approx. weight kg
K0256.108008	K0256.10800802	1	8	80	25	19	2,5	17,5	13	37,5	-/2	-/9	0,074
K0256.108010	K0256.10801003	1	10	80	25	19	2,5	17,5	13	37,5	-/3	-/11,4	0,074
K0256.108012	K0256.10801204	1	12	80	25	19	2,5	17,5	13	37,5	-/4	-/13,8	0,074
K0256.210010	K0256.21001003	2	10	100	28	19	3	20	13	44	-/3	-/11,4	0,125
K0256.210012	K0256.21001204	2	12	100	28	19	3	20	13	44	-/4	-/13,8	0,125
K0256.312512	K0256.31251204	3	12	125	35	25	4	23,5	18,5	53	-/4	-/13,8	0,229
K0256.312514	K0256.31251405	3	14	125	35	25	4	23,5	18,5	53	-/5	-/16,3	0,229
K0256.312516	K0256.31251605	3	16	125	35	25	4	23,5	18,5	53	-/5	-/18,3	0,229
K0256.416014	K0256.41601405	4	14	160	45	25	5,6	28	18,5	64,5	-/5	-/16,3	0,425
K0256.416016	K0256.41601605	4	16	160	45	25	5,6	28	18,5	64,5	-/5	-/18,3	0,425