

Bullseye level body

Item description/product images



| Winkelminute | Grad in Dezimalform | Höhenunterschied in Millimeter pro Meter |
|--------------|---------------------|--|
| 1' | 0,0167° | 0,291 mm |
| 5' | 0,0833° | 1,455 mm |
| 10' | 0,1667° | 2,910 mm |
| 20' | 0,3333° | 5,820 mm |
| 25' | 0,4167° | 7,275 mm |
| 30' | 0,5000° | 8,730 mm |
| 40' | 0,6667° | 11,640 mm |
| 50' | 0,8333° | 14,550 mm |
| 53' | 0,8833° | 15,423 mm |

Description

Material:

Bullseye level body stainless steel up to Ø14 mm, then aluminium.
Sight window glass.

Version:

Aluminium black anodised.

Note:

Bubble levels are used as a type of zero indicator instrument for checking horizontal inclination in e.g. spirit levels, inclinometers, metrology instruments and machine constructions.

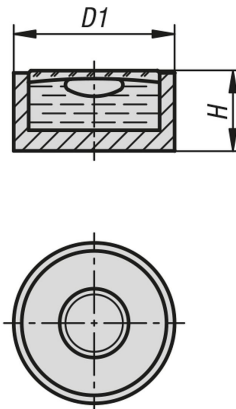
Excellent bubble contour, with internal bubble ring to eliminate planar parallaxes.

- Sensitivity in angular minutes for 2 mm bubble travel
- Clear filling

Temperature range:

-35 °C up to +55 °C.

Drawings



Overview of items

Bullseye level body

| Order No. | Main material | D1 | H | Sensitivity |
|--------------|-----------------|----|-----|-------------|
| K1156.120710 | stainless steel | 12 | 6 | 10' |
| K1156.120725 | stainless steel | 12 | 6 | 25' |
| K1156.140710 | aluminium | 14 | 6,5 | 10' |
| K1156.140720 | aluminium | 14 | 6,5 | 20' |
| K1156.150710 | aluminium | 15 | 6,5 | 10' |
| K1156.150720 | aluminium | 15 | 6,8 | 20' |
| K1156.200810 | aluminium | 20 | 8,5 | 10' |
| K1156.200820 | aluminium | 20 | 8,5 | 20' |
| K1156.250910 | aluminium | 25 | 8,5 | 10' |
| K1156.250920 | aluminium | 25 | 8,5 | 20' |

