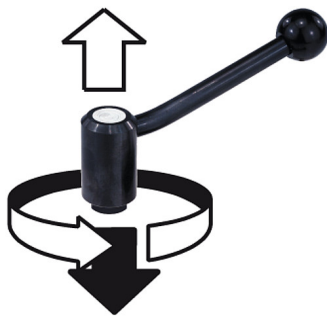


Safety tension levers with internal thread

Item description/product images



engage
by pressing
(safety function)



Description

Material:

Steel parts quality class 5.8;
black plastic ball knob

Surface finish:

Plastic-coated with fine texture, black

Type of operation:

To operate safety tension levers, press the handle down until the teeth are fully engaged. The object concerned can now be clamped or released. Spring pressure releases the locking mechanism immediately, thereby restoring the safety function (handle can be turned effortlessly).

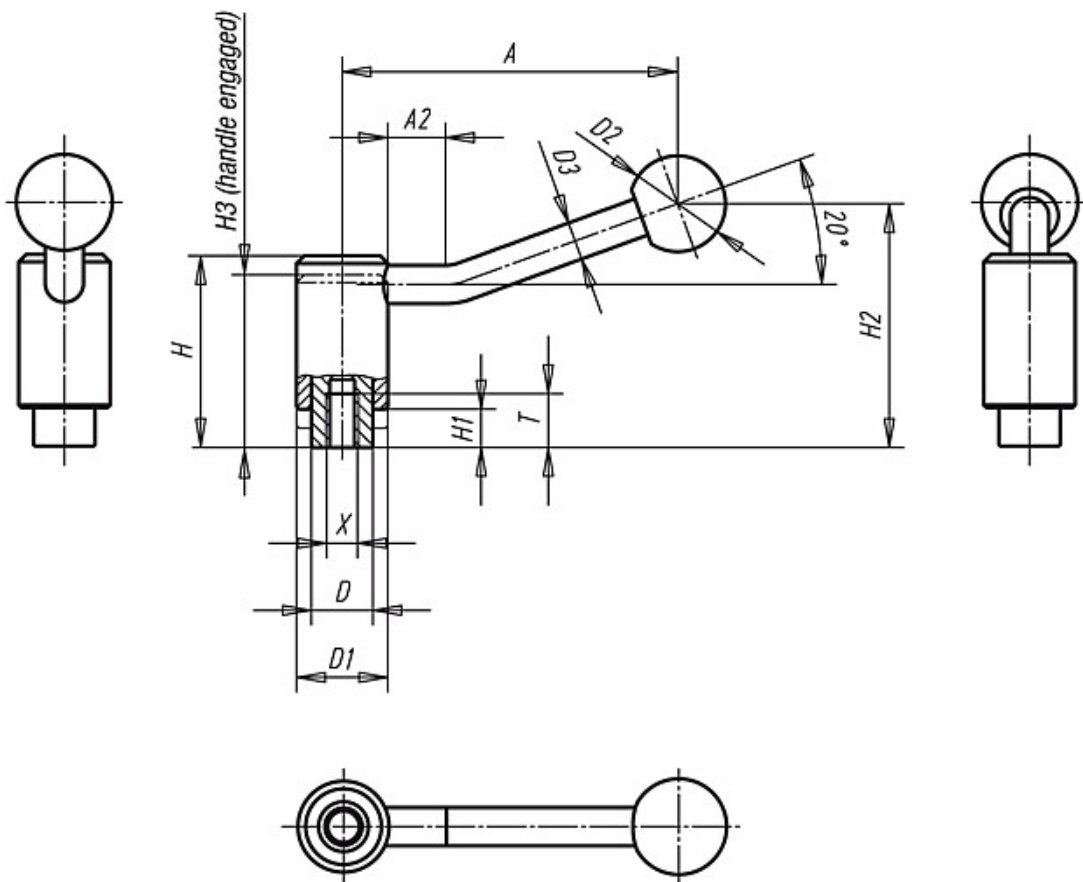
On request:

Special versions.

Dimensions "H1" and "A" available in other lengths at extra charge.

Safety tension levers with internal thread

Drawings



Overview of items

Order No.	Size	Internal thread X	T	D	D1	D2	D3	H	H1	H2	H3	A	A2	No. of teeth	Approx. weight kg
K0112.1108	1	M8	14	16	24	25	10	49,5	9,5	63,5	44,5	88	15	22	0,160
K0112.1110	1	M10	14	16	24	25	10	49,5	9,5	63,5	44,5	88	15	22	0,160
K0112.1210	2	M10	17	19	28	32	12	56,5	10,5	74	51	106	15	24	0,250
K0112.1212	2	M12	17	19	28	32	12	56,5	10,5	74	51	106	15	24	0,250
K0112.1312	3	M12	23	23	33	32	13	64,5	12,5	87,5	57,5	128,5	15	26	0,370
K0112.1316	3	M16	23	23	33	32	13	64,5	12,5	87,5	57,5	128,5	15	26	0,370

