

Aluminium handwheels DIN 950

Item description/product images



Description

Material:

Handwheel in aluminium.
Machine handle in aluminium.
Axle part in steel, black oxide finish.

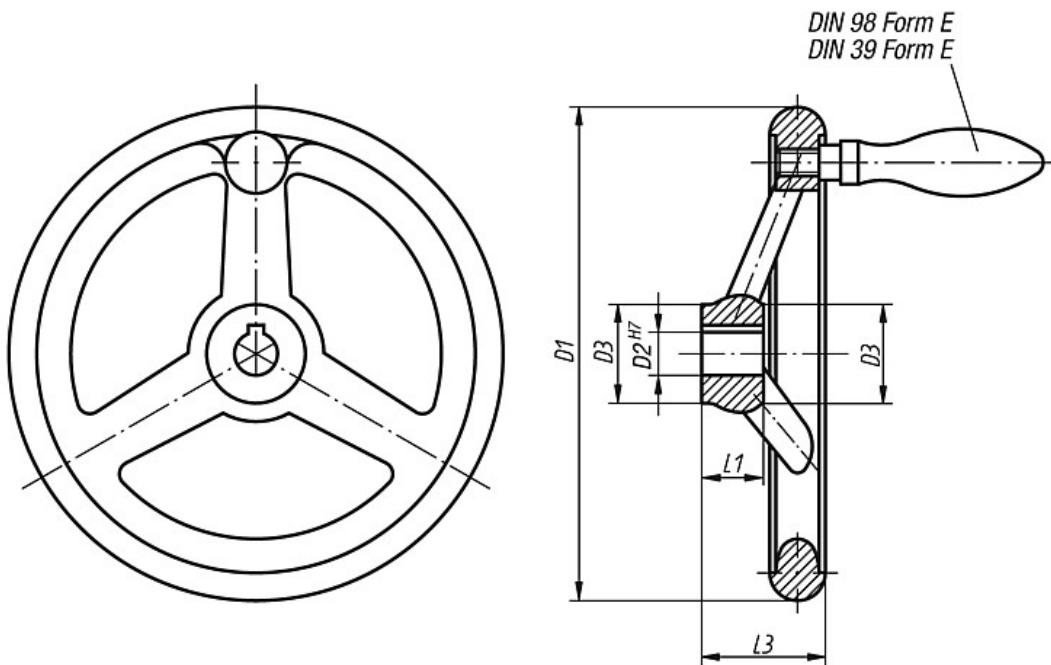
Surface finish:

Wheel rim turned and polished.
Centre bore is concentric and parallel with outside of handle to IT 12.

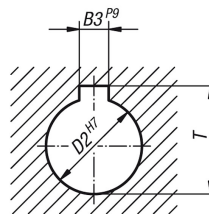
On request:

Hubs with square socket or plastic-coated handwheels.

Drawings



hub slot according to DIN 6885-1



Overview of items

Order No. hub without slot	Order No. hub with slot	D1	D2 line 1	D2 line 2	D3	L1	L3	B3 line 1	B3 line 2	T line 1	T line 2	Number of spokes
K0160.0080X10	K0160.1080X10	80	10	-	24	16	29	3	-	11,4	-	3
K0160.0080X12	K0160.1080X12	80	-	12	24	16	29	-	4	-	13,8	3
K0160.0100X10	K0160.1100X10	100	10	-	26	17	33	3	-	11,4	-	3
K0160.0100X12	K0160.1100X12	100	-	12	26	17	33	-	4	-	13,8	3

Aluminium handwheels DIN 950

Overview of items

Order No. hub without slot	Order No. hub with slot	D1	D2 line 1	D2 line 2	D3	L1	L3	B3 line 1	B3 line 2	T line 1	T line 2	Number of spokes
K0160.0125X12	K0160.1125X12	125	12	-	28	18	36	4	-	13,8	-	3
K0160.0125X14	K0160.1125X14	125	-	14	28	18	36	-	5	-	16,3	3
K0160.0140X14	K0160.1140X14	140	14	-	30	19	39	5	-	16,3	-	3
K0160.0140X16	K0160.1140X16	140	-	16	30	19	39	-	5	-	18,3	3
K0160.0160X14	K0160.1160X14	160	14	-	32	20	40	5	-	16,3	-	3
K0160.0160X16	K0160.1160X16	160	-	16	32	20	40	-	5	-	18,3	3
K0160.0180X16	K0160.1180X16	180	16	-	35	22	43	5	-	18,3	-	3
K0160.0180X18	K0160.1180X18	180	-	18	35	22	43	-	6	-	20,8	3
K0160.0200X18	K0160.1200X18	200	18	-	38	24	45	6	-	20,8	-	3
K0160.0200X22	K0160.1200X22	200	-	22	38	24	45	-	6	-	24,8	3
K0160.0250X22	K0160.1250X22	250	22	-	45	28	50	6	-	24,8	-	5
K0160.0250X26	K0160.1250X26	250	-	26	45	28	50	-	8	-	29,3	5
K0160.0315X26	K0160.1315X26	315	26	-	53	33	56	8	-	29,3	-	5
K0160.0315X30	K0160.1315X30	315	-	30	53	33	56	-	8	-	33,3	5
K0160.0400X30	K0160.1400X30	400	30	-	65	38	63	8	-	33,3	-	5
K0160.0400X34	K0160.1400X34	400	-	34	65	38	63	-	10	-	37,3	5
K0160.0500X34	K0160.1500X34	500	34	-	78	45	72	10	-	37,3	-	5
K0160.0500X40	K0160.1500X40	500	-	40	78	45	72	-	12	-	43,3	5

Order No. hub without slot	Order No. hub with slot	D1	D2 line 1	D2 line 2	D3	L1	L3	B3 line 1	B3 line 2	T line 1	T line 2	Number of spokes	fixed machine handle DIN 39 Form E
K0160.2080X10	K0160.3080X10	80	10	-	24	16	29	3	-	11,4	-	3	ø16 x M6 x 50
K0160.2080X12	K0160.3080X12	80	-	12	24	16	29	-	4	-	13,8	3	ø16 x M6 x 50
K0160.2100X10	K0160.3100X10	100	10	-	26	17	33	3	-	11,4	-	3	ø16 x M6 x 50
K0160.2100X12	K0160.3100X12	100	-	12	26	17	33	-	4	-	13,8	3	ø16 x M6 x 50
K0160.2125X12	K0160.3125X12	125	12	-	28	18	36	4	-	13,8	-	3	ø20 x M8 x 64
K0160.2125X14	K0160.3125X14	125	-	14	28	18	36	-	5	-	16,3	3	ø20 x M8 x 64
K0160.2140X14	K0160.3140X14	140	14	-	30	19	39	5	-	16,3	-	3	ø20 x M8 x 64
K0160.2140X16	K0160.3140X16	140	-	16	30	19	39	-	5	-	18,3	3	ø20 x M8 x 64
K0160.2160X14	K0160.3160X14	160	14	-	32	20	40	5	-	16,3	-	3	ø25 x M10 x 80
K0160.2160X16	K0160.3160X16	160	-	16	32	20	40	-	5	-	18,3	3	ø25 x M10 x 80
K0160.2180X16	K0160.3180X16	180	16	-	35	22	43	5	-	18,3	-	3	ø25 x M10 x 80
K0160.2180X18	K0160.3180X18	180	-	18	35	22	43	-	6	-	20,8	3	ø25 x M10 x 80
K0160.2200X18	K0160.3200X18	200	18	-	38	24	45	6	-	20,8	-	3	ø25 x M10 x 80
K0160.2200X22	K0160.3200X22	200	-	22	38	24	45	-	6	-	24,8	3	ø25 x M10 x 80
K0160.2250X22	K0160.3250X22	250	22	-	45	28	50	6	-	24,8	-	5	ø32 x M12 x 100
K0160.2250X26	K0160.3250X26	250	-	26	45	28	50	-	8	-	29,3	5	ø32 x M12 x 100
K0160.2315X26	K0160.3315X26	315	26	-	53	33	56	8	-	29,3	-	5	ø32 x M12 x 100
K0160.2315X30	K0160.3315X30	315	-	30	53	33	56	-	8	-	33,3	5	ø32 x M12 x 100
K0160.2400X30	K0160.3400X30	400	30	-	65	38	63	8	-	33,3	-	5	ø36 x M16 x 112
K0160.2400X34	K0160.3400X34	400	-	34	65	38	63	-	10	-	37,3	5	ø36 x M16 x 112
K0160.2500X34	K0160.3500X34	500	34	-	78	45	72	10	-	37,3	-	5	ø36 x M16 x 112
K0160.2500X40	K0160.3500X40	500	-	40	78	45	72	-	12	-	43,3	5	ø36 x M16 x 112

Order No. hub without slot	Order No. hub with slot	D1	D2 line 1	D2 line 2	D3	L1	L3	B3 line 1	B3 line 2	T line 1	T line 2	Number of spokes	revolving machine handle DIN 98 Form E
K0160.4080X10	K0160.5080X10	80	10	-	24	16	29	3	-	11,4	-	3	ø16 x M6 x 54,5
K0160.4080X12	K0160.5080X12	80	-	12	24	16	29	-	4	-	13,8	3	ø16 x M6 x 54,5
K0160.4100X10	K0160.5100X10	100	10	-	26	17	33	3	-	11,4	-	3	ø16 x M6 x 54,5
K0160.4100X12	K0160.5100X12	100	-	12	26	17	33	-	4	-	13,8	3	ø16 x M6 x 54,5
K0160.4125X12	K0160.5125X12	125	12	-	28	18	36	4	-	13,8	-	3	ø20 x M8 x 67
K0160.4125X14	K0160.5125X14	125	-	14	28	18	36	-	5	-	16,3	3	ø20 x M8 x 67
K0160.4140X14	K0160.5140X14	140	14	-	30	19	39	5	-	16,3	-	3	ø20 x M8 x 67
K0160.4140X16	K0160.5140X16	140	-	16	30	19	39	-	5	-	18,3	3	ø20 x M8 x 67
K0160.4160X14	K0160.5160X14	160	14	-	32	20	40	5	-	16,3	-	3	ø25 x M10 x 83
K0160.4160X16	K0160.5160X16	160	-	16	32	20	40	-	5	-	18,3	3	ø25 x M10 x 83
K0160.4180X16	K0160.5180X16	180	16	-	35	22	43	5	-	18,3	-	3	ø25 x M10 x 83
K0160.4180X18	K0160.5180X18	180	-	18	35	22	43	-	6	-	20,8	3	ø25 x M10 x 83
K0160.4200X18	K0160.5200X18	200	18	-	38	24	45	6	-	20,8	-	3	ø25 x M10 x 83
K0160.4200X22	K0160.5200X22	200	-	22	38	24	45	-	6	-	24,8	3	ø25 x M10 x 83

Aluminium handwheels DIN 950

Overview of items

Order No. hub without slot	Order No. hub with slot	D1	D2 line 1	D2 line 2	D3	L1	L3	B3 line 1	B3 line 2	T line 1	T line 2	Number of spokes	revolving machine handle DIN 98 Form E
K0160.4250X22	K0160.5250X22	250	22	-	45	28	50	6	-	24,8	-	5	ø32 x M12 x 105,5
K0160.4250X26	K0160.5250X26	250	-	26	45	28	50	-	8	-	29,3	5	ø32 x M12 x 105,5
K0160.4315X26	K0160.5315X26	315	26	-	53	33	56	8	-	29,3	-	5	ø32 x M12 x 105,5
K0160.4315X30	K0160.5315X30	315	-	30	53	33	56	-	8	-	33,3	5	ø32 x M12 x 105,5
K0160.4400X30	K0160.5400X30	400	30	-	65	38	63	8	-	33,3	-	5	ø36 x M16 x 117
K0160.4400X34	K0160.5400X34	400	-	34	65	38	63	-	10	-	37,3	5	ø36 x M16 x 117
K0160.4500X34	K0160.5500X34	500	34	-	78	45	72	10	-	37,3	-	5	ø36 x M16 x 117
K0160.4500X40	K0160.5500X40	500	-	40	78	45	72	-	12	-	43,3	5	ø36 x M16 x 117