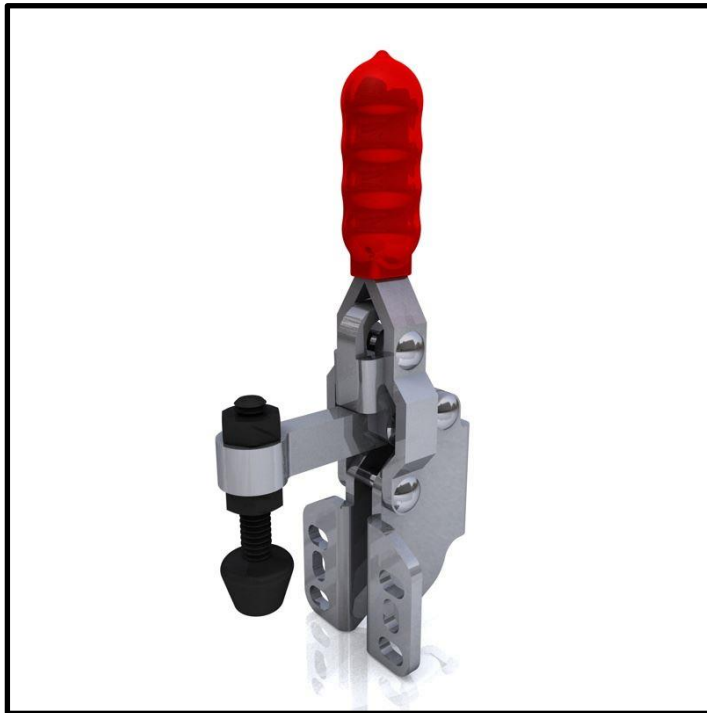


Vertical Toggle Clamp

Part No. GH-12050-SM



Product Description

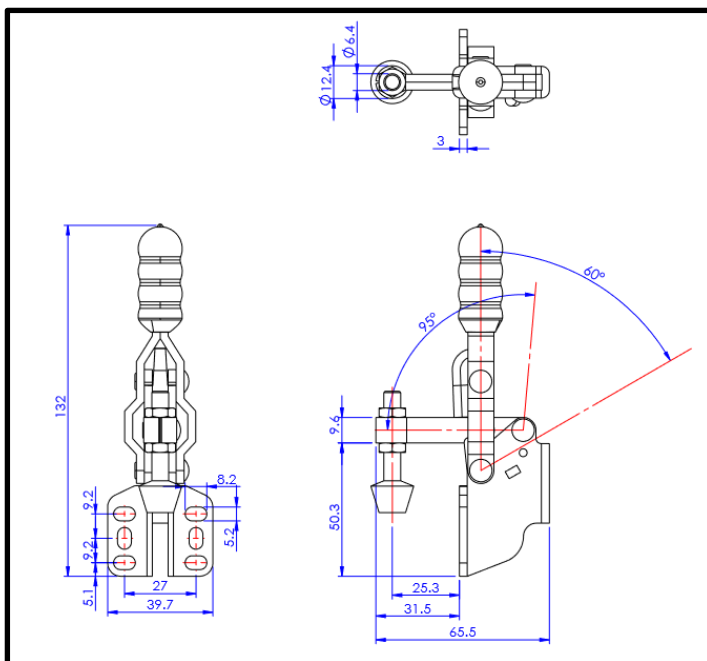
Vertical Toggle Clamp Side
Mounting Fixed Arm Size 91Kg

Key Features

Overall Height: 132mm
Underarm Height: 50.3mm
Arm Length: 25.3mm
Holding Force: 91Kg

Other Features

Arm Opens: 95°
Handle Opens: 60°
Weight: 0.186Kg



Material

Clamp: Zinc Plated Mild Steel
Spindle: Neoprene Tipped Steel
Handle: uPVC

What's In The Bag?

GH-12050-SM: Toggle Clamp
FC-064410: M6x44mm Neoprene Tipped Spindle
With Nuts