

Heavy Duty Vertical Toggle Clamp Part No. GH-70515



Product Description

Heavy Duty Toggle Clamp Straight Base Solid
Arm Size 1000daN

Key Features

Overall Height:	172.5mm
Underarm Height:	63.2mm
Arm Length:	26.5mm
Holding Force:	1000daN

Other Features

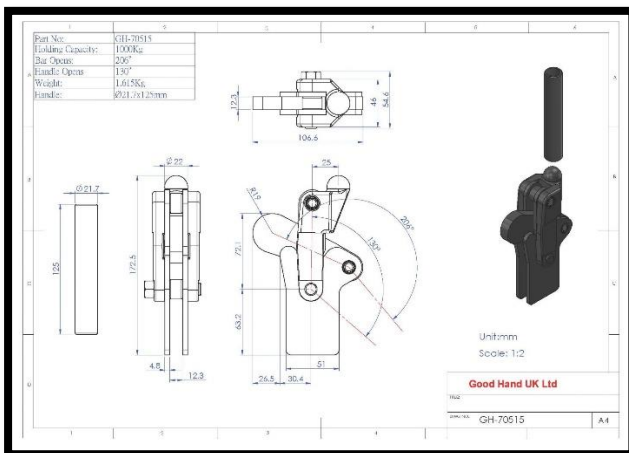
Arm Opens:	206°
Handle Opens:	130°
Weight:	1.59Kg

Material

Toggle Clamp:	Cast Iron
Spindle:	Cast Iron
Handle:	Cast Iron
Flanged Washers:	

Whats In The Bag?

Toggle Clamp:	GH-70515
Spindle:	
2x Flanged Washers:	



goodhanduk.co.uk

01908 221 151