

# Solid Arm Toggle Latches

## Part No. CT-0810



### Product Description

Solid Arm Latch Without Catch Plate Zinc Plated L= 155mm

### Key Features

Overall Length: 155mm  
Load Capacity: 50daN

### Other Features

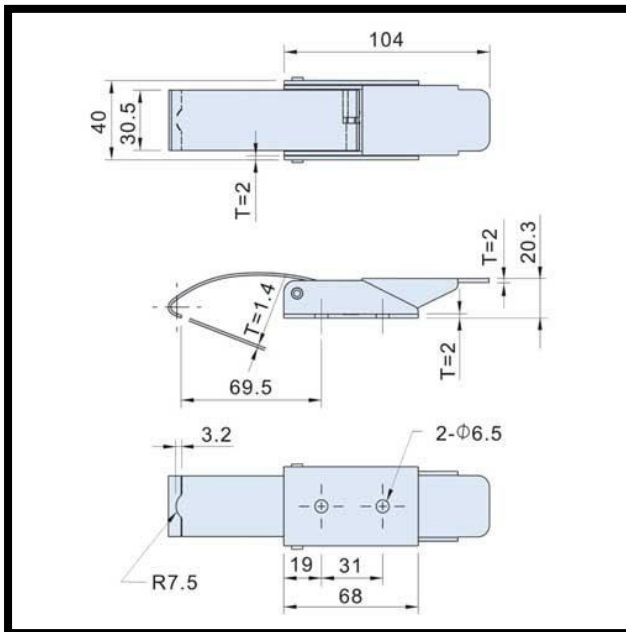
Weight: 0.199Kg

### Material

Toggle Latch: Zinc Plated Steel

### What's In The Bag?

Toggle Latch: CT-0810



[goodhanduk.co.uk](http://goodhanduk.co.uk)

01908 221 151