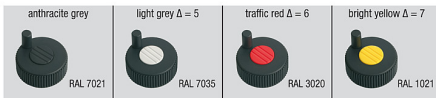


# Positioning wheels

## Item description/product images



## Description

### Product description:

The extremely attractive design and the excellent ergonomic form make this positioning wheel a trend-setting product, which allows precise and secure positioning. Due to the sophisticated technology, the positioning wheels make any type of work easier than before.

### Material, surface finish:

Anthracite grey thermoplastic.  
Bush in steel 5.8, blue chromated.

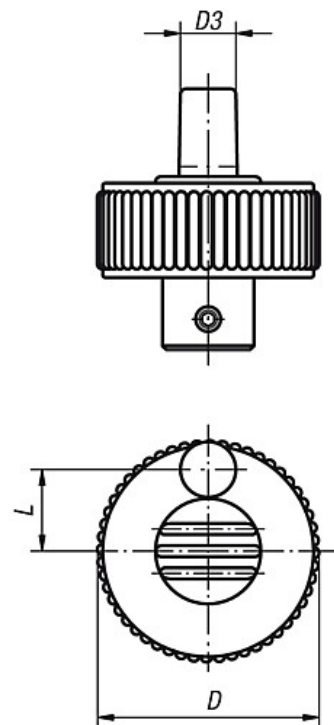
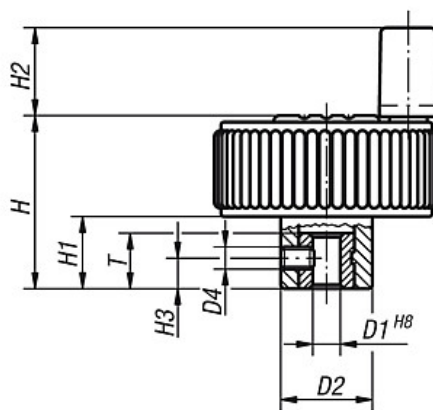
### Note:

Δ Add the desired cap colour here. No colour code is required with anthracite grey wheel caps.

## Drawings

Form H  
without transverse hole

Form M  
with transverse hole  
and grub screw



## Positioning wheels

### Overview of items

Order No.	Form	Size	D	D1	D2	D3	D4	H	H1	H2	H3	L	T
K0262.2106Δ	H	1	40	6	16,5	10	-	31	13	16	-	15	10
K0262.2206Δ	H	2	50	6	18	10	-	36	15	16	-	18,5	10
K0262.2308Δ	H	3	63	8	22	10	-	41	17	16	-	25	14
K0262.1106Δ	M	1	40	6	16,5	10	M4	31	13	16	5,5	15	10
K0262.1206Δ	M	2	50	6	18	10	M4	36	15	16	5,5	18,5	10
K0262.1308Δ	M	3	63	8	22	10	M4	41	17	16	8	25	14